

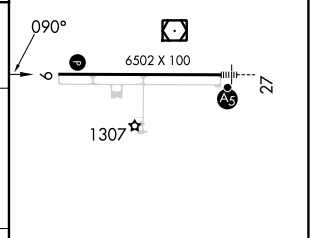
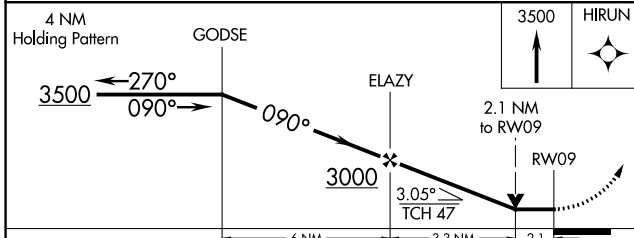
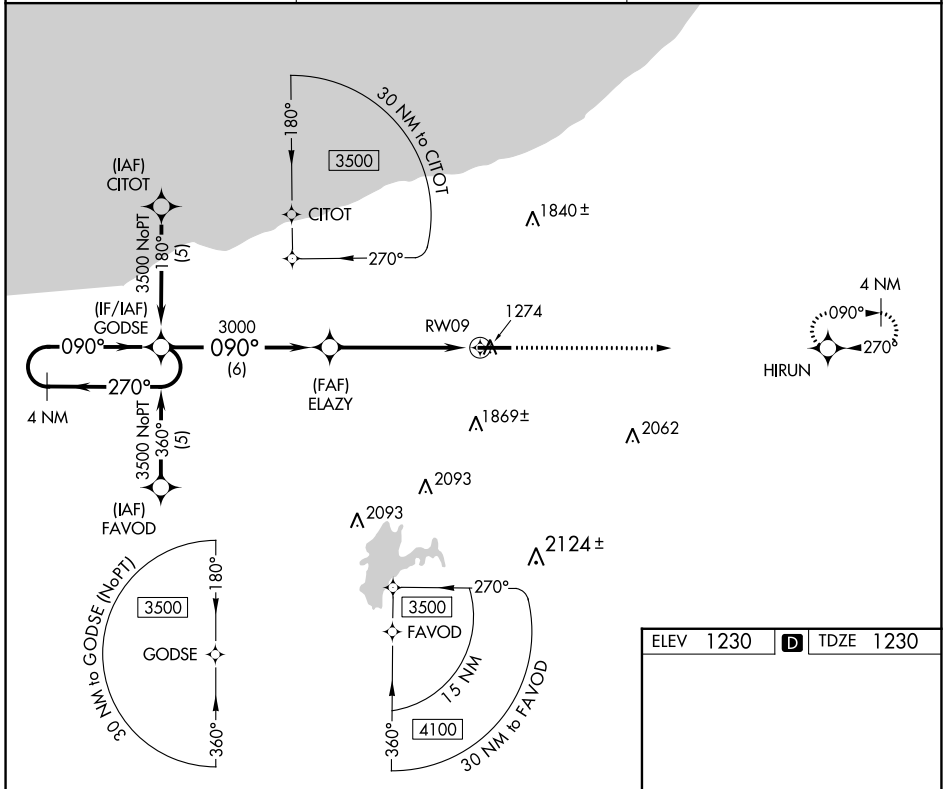
APP CRS	Rwy Idg	<b>6501</b>
<b>090°</b>	TDZE	<b>1230</b>
	Apt Elev	<b>1230</b>

# RNAV (GPS) RWY 9

GOGEBIC/IRON COUNTY (IWD)

RNP APCH - GPS.		MISSED APPROACH: Climb to 3500 direct HIRUN and hold.
Visibility reduction by helicopters NA. When local altimeter setting not received, use Ashland altimeter setting: increase all MDA 140 feet and LNAV Cat B visibility ¼ SM, Cat C/D visibility ½ SM and Circling Cat B visibility ¼ SM.		

AWOS-3PT <b>125.175</b>	MINNEAPOLIS CENTER <b>133.55</b>	UNICOM <b>122.8 (CTAF)</b>
----------------------------	-------------------------------------	-------------------------------



CATEGORY	A	B	C	D
LNAV MDA	1940-1 710 (800-1)		1940-2 710 (800-2)	1940-2¼ 710 (800-2¼)
CIRCLING	2100-1¼ 870 (900-1¼)		2200-3 970 (1000-3)	2220-3 990 (1000-3)



EC-1, 05 SEP 2024 to 03 OCT 2024

EC-1, 05 SEP 2024 to 03 OCT 2024