

VORTAC BGQ <b>112.5</b> Chan 72	APP CRS <b>096°</b>	Rwy Idg TDZE Apt Elev	<b>2450</b> <b>162</b> <b>162</b>
---------------------------------------	------------------------	-----------------------------	---

**VOR RWY 7**  
BIG LAKE (BGQ) (PAGQ)



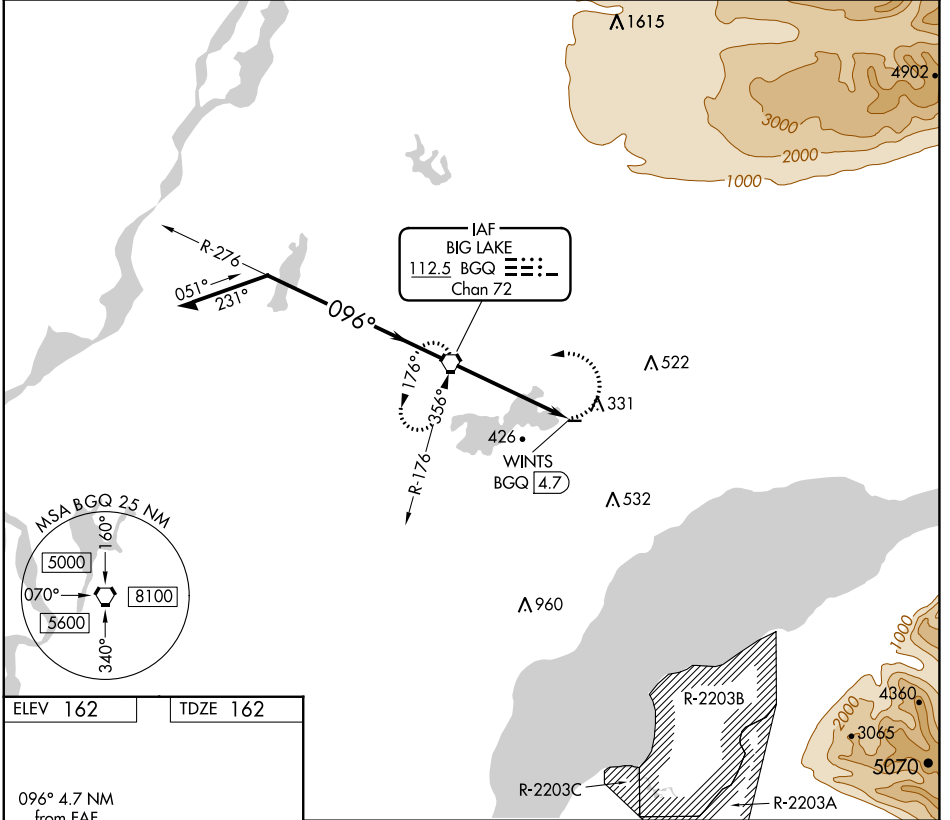
Procedure NA at night. Rwy 7 helicopter visibility reduction below 1 SM NA. Use Anchorage altimeter setting.

MISSED APPROACH: Climbing left turn to 2000 direct BGQ VORTAC and hold, climb-in-hold to 2000.

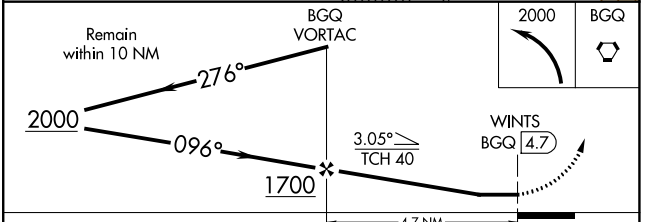
ANC ASOS  
**135.5**

ANCHORAGE APP CON  
**118.6**

CTAF  
**122.80**



ELEV 162	TDZE 162
----------	----------



MIRL Rwy 7-25

FAF to MAP 4.7 NM

Knots	60	90	120	150	180
Min:Sec	4:42	3:08	2:21	1:53	1:34

CATEGORY	A	B	C	D
S-7	980-1 818 (900-1)	980-1¼ 818 (900-1¼)	980-2½ 818 (900-2½)	NA
<input checked="" type="checkbox"/> CIRCLING	980-1¼	818 (900-1¼)	980-2½ 818 (900-2½)	NA

AK, 05 SEP 2024 to 31 OCT 2024

AK, 05 SEP 2024 to 31 OCT 2024