

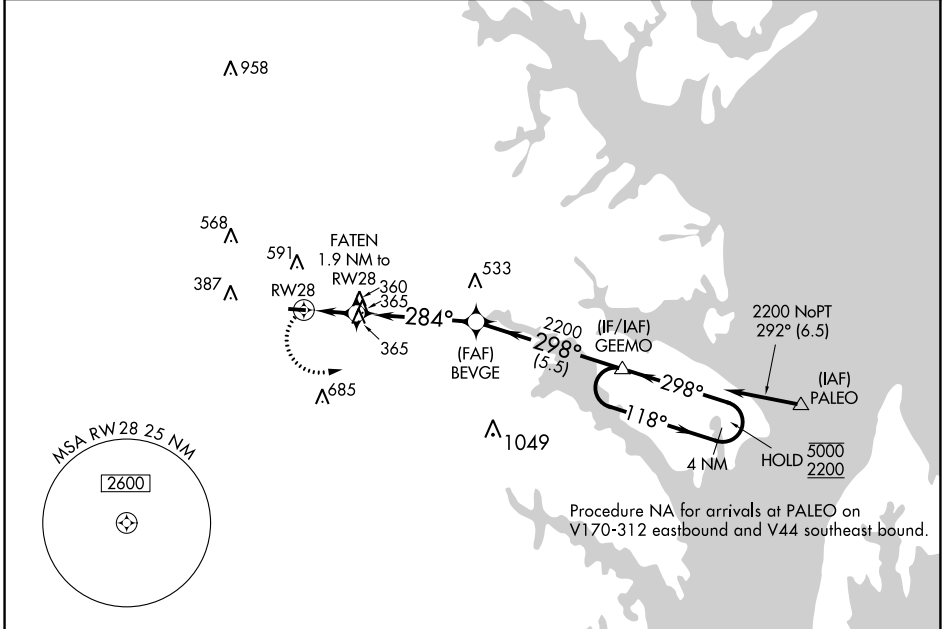
APP CRS 284°	Rwy Idg TDZE Apt Elev	3000 150 150
------------------------	-----------------------------	---

RNAV (GPS) RWY 28

TIPTON (FME)

RNP APCH - GPS.	MISSED APPROACH: Climbing left turn to 2200 direct GEEMO and hold.
<p>⚠ Rwy 28 helicopter visibility reduction below 1 SM NA.</p>	

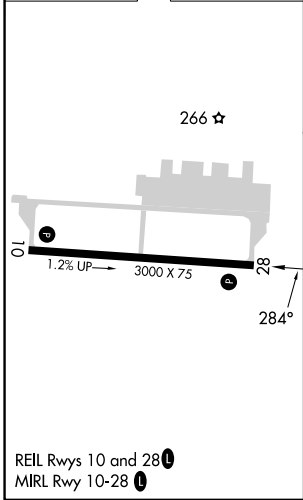
AWOS-3 123.925	POTOMAC APP CON 119.7 290.475	UNICOM 123.05 (CTAF) 📻
--------------------------	---	---



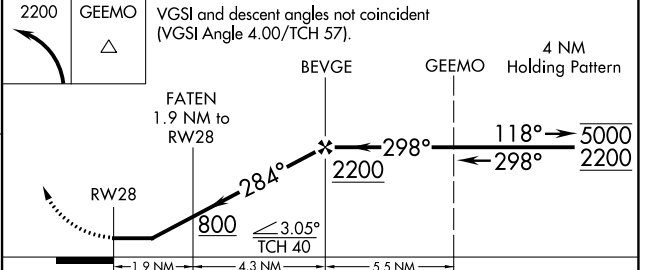
NE-3, 05 SEP 2024 to 03 OCT 2024

NE-3, 05 SEP 2024 to 03 OCT 2024

ELEV 150	TDZE 150
----------	----------



2200	GEEMO	VGSI and descent angles not coincident (VGSI Angle 4.00/TCH 57).
------	-------	--



CATEGORY	A	B	C	D
LNAV MDA	620-1	470 (500-1)		NA
CIRCLING	820-1 670 (700-1)	960-1 810 (900-1)		NA