

WAAS CH <b>87109</b> <b>W06A</b>	APP CRS <b>064°</b>	Rwy Idg TDZE Apt Elev	<b>6701</b> <b>1231</b> <b>1231</b>
--	------------------------	-----------------------------	---

# RNAV (GPS) RWY 6

STATE COLLEGE RGNL (UNV)

RNP APCH - GPS.

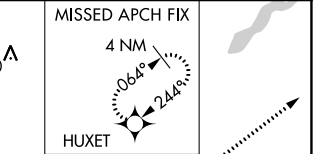
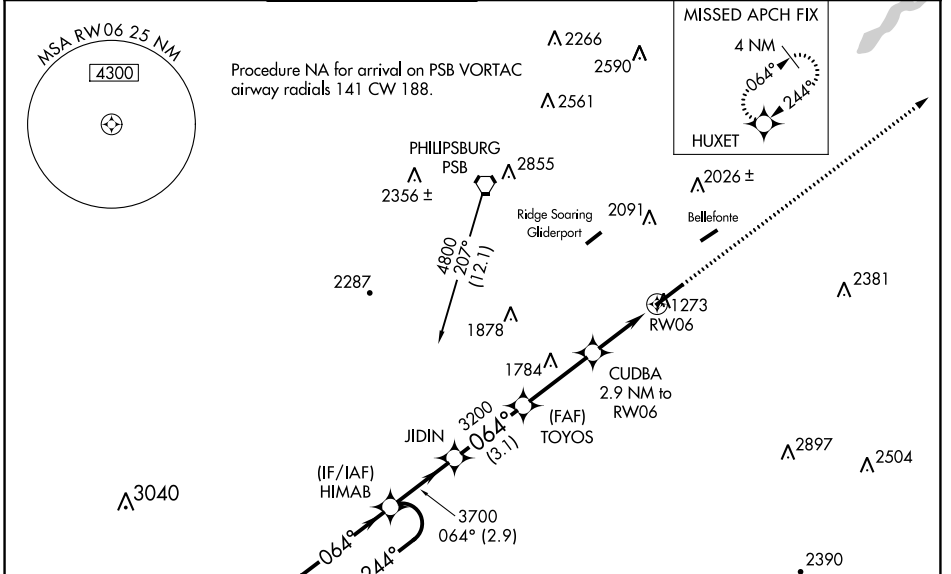
For uncompensated Baro-VNAV systems, LNAV/VNAV NA below -17°C or above 54°C.

⚠ Circling NA NW of Rwy 6-24. Baro-VNAV and VDP NA when using Clearfield altimeter setting.

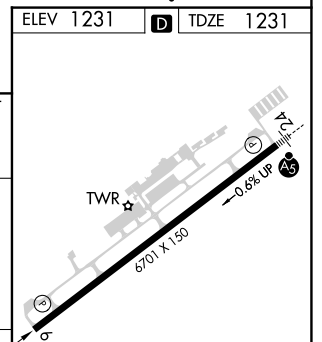
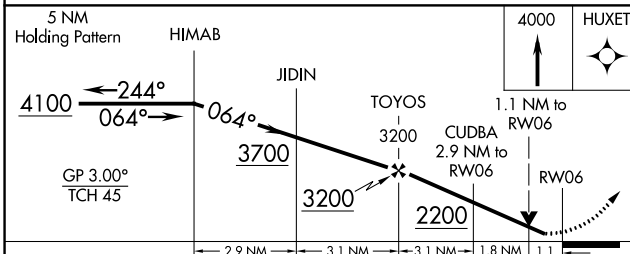
⚠ When local altimeter setting not received, use Clearfield altimeter setting: increase LPV DA to 1537 feet, LNAV/VNAV DA to 1626 feet and all visibilities ½ SM; increase all MDAs 120 feet and visibility LNAV Cats C/D ¾ SM and Circling Cat C ½ SM.

MISSED APPROACH: Climb to 4000 direct HUXET and hold.

D-ATIS <b>127.65</b>	NEW YORK CENTER <b>134.8 338.3</b>	UNIVERSITY PARK ★ <b>128.475</b> (CTAF) <b>0</b>	GND CON <b>125.725</b>	CLNC DEL <b>125.725</b>	CLNC DEL <b>118.55</b> (When tower closed)	UNICOM <b>122.95</b>
-------------------------	---------------------------------------	---	---------------------------	----------------------------	--	-------------------------



ELEV 1231	TDZE 1231
-----------	-----------



CATEGORY	A	B	C	D
LPV DA		1431-¾	200 (200-¾)	
LNAV/VNAV DA		1520-1	289 (300-1)	
LNAV MDA	1640-1	409 (500-1)	1640-1⅛	409 (500-1⅛)
CIRCLING	1640-1 409 (500-1)	1700-1 469 (500-1)	1940-2 709 (800-2)	2580-3 1349 (1400-3)

REIL Rwy 6 **0**  
HIRL Rwy 6-24 **0**

NE-4, 05 SEP 2024 to 03 OCT 2024

NE-4, 05 SEP 2024 to 03 OCT 2024