

WAAS CH 97512 W32A	APP CRS 324°	Rwy Idg TDZE Apt Elev	5498 715 726
--	------------------------	-----------------------------	---

RNAV (GPS) RWY 32

WINCHESTER RGNL (OKV)

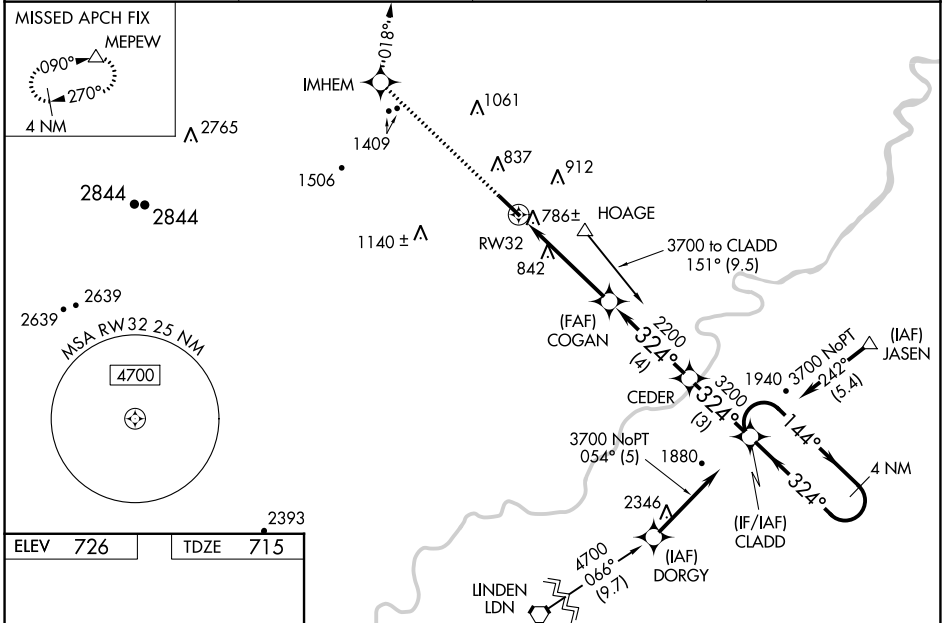
RNP APCH.

Baro-VNAV NA when using Martinsburg altimeter setting. For uncompensated Baro-VNAV systems, LNAV/VNAV NA below -16°C or above 47°C.
Rwy 32 helicopter visibility reduction below 3/4 SM NA. When local altimeter setting not received, use Martinsburg altimeter setting and increase all DA 63 feet and all MDA 80 feet, and LNAV/VNAV all Cats and Circling Cat C visibility 1/4 mile. For inoperative MALS, increase LNAV Cats A, B and C visibility to 1 mile and LNAV Cat D visibility to 1 1/4 mile. Inoperative table does not apply to LPV. For inoperative MALS when using Martinsburg altimeter setting, increase LPV all Cats and LNAV Cats A and B visibility to 1 mile. VDP NA when using Martinsburg altimeter setting.

MALS

MISSED APPROACH: Climb to 5000 direct IMHEM and via track 018° to MEPEW and hold, continue climb-in-hold to 5000.

AWOS-3 124.85	POTOMAC APP CON 120.45 306.925	CLNC DEL 126.15	UNICOM 122.975 (CTAF)
--------------------------------	---	----------------------------------	--



5000	IMHEM	tr 018°	MEPEW	CLADD	4 NM Holding Pattern
*LNAV only		*1.1 NM to RW32	COGAN	CEDER	GP 3.00° TCH 44
RW32		1.1	3.4 NM	4 NM	3 NM
324°	3200	324°	3200	144°	3700
CATEGORY		A	B	C	D
LPV DA		915-3/4 200 (200-3/4)			
LNAV/VNAV DA		1056-3/4 341 (400-3/4)			
LNAV MDA		1100-3/4 385 (400-3/4)			
CIRCLING	1180-1 454 (500-1)	1220-1 494 (500-1)	1380-1 3/4 654 (700-1 3/4)	1480-2 1/2 754 (800-2 1/2)	1100-1 385 (400-1)

NE-3, 05 SEP 2024 to 03 OCT 2024

NE-3, 05 SEP 2024 to 03 OCT 2024