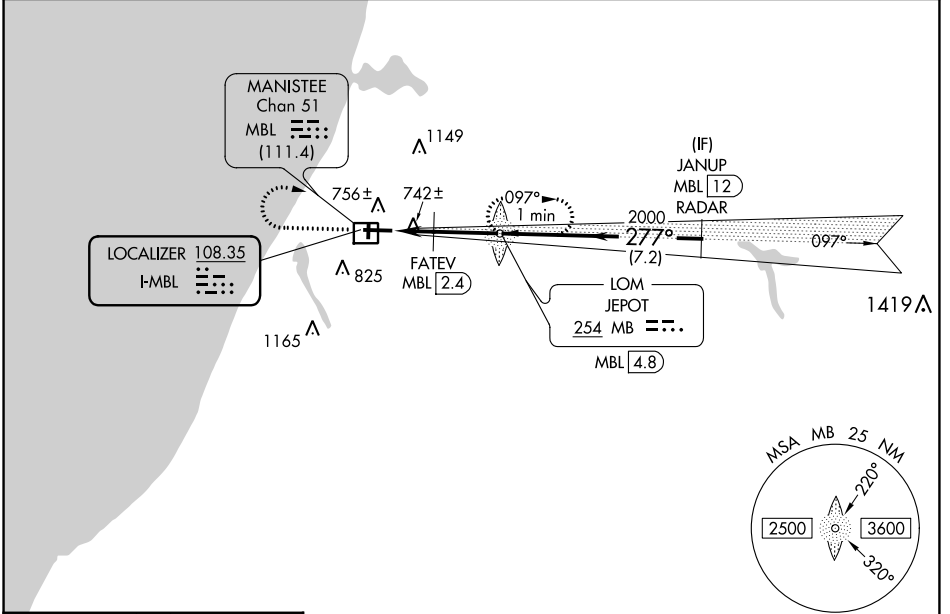


LOC I-MBL <b>108.35</b>	APP CRS <b>277°</b>	Rwy Idg <b>5501</b>
		TDZE <b>621</b>
		Apt Elev <b>621</b>

# ILS or LOC RWY 28

MANISTEE COUNTY/BLACKER (MBL)

ADF required for missed approach. RADAR required for procedure entry. DME or RADAR required.		MALSR 	MISSED APPROACH: Climb to 2000 then climbing right turn to 2500 direct JEPOT LOM/MBL 4.8 DME and hold.
Circling Rwy 1, 19 NA at night. For inop ALS, increase FATEV fix minimums S-LOC 28 Cat C and D visibility to 1 SM. DME from MBL DME. DME use requires simultaneous reception of I-MBL and MBL DME.			
AWOS-3PT <b>118.825</b>	MINNEAPOLIS CENTER <b>120.85 322.35</b>	UNICOM <b>122.8 (CTAF) </b>	



EC-1, 05 SEP 2024 to 03 OCT 2024

EC-1, 05 SEP 2024 to 03 OCT 2024

ELEV 621	<b>D</b>	TDZE 621				
2000 2500 MB LOM		VGS1 and ILS glidepath not coincident (VGS1 Angle 3.00/TCH 45). MB LOM JEPOT MBL 4.8 JANUP MBL 12 RADAR				
61 10 2721 X 75 28 277° 5501 X 100		FATEV MBL 2.4 MBL 1.9 MBL 0.9 1160 1921 277° → 2800 GS 3.00° TCH 50				
		1 NM — 0.5 NM — 2.4 NM — 7.2 NM				
CATEGORY	A	B	C	D		
S-ILS 28	821-½ 200 (200-½)					
S-LOC 28	1160-½	539 (600-½)	1160-1	539 (600-1)		
<b>C</b> CIRCLING	1160-1	1220-1	1400-2¼	1520-3		
	539 (600-1)	599 (600-1)	779 (800-2¼)	899 (900-3)		
FATEV FIX MINIMUMS						
S-LOC 28	1000-½	379 (400-½)	1000-¾	379 (400-¾)		
<b>C</b> CIRCLING	1160-1	1220-1	1400-2¼	1520-3		
	539 (600-1)	599 (600-1)	779 (800-2¼)	899 (900-3)		
FAF to MAP 3.9 NM						
Knots	60	90	120	150	180	
Min:Sec	3:54	2:36	1:57	1:34	1:18	