

VOR/DME HUO 116.1 Chan 108	APP CRS 080°	Rwy Idg TDZE Apt Elev	3664 359 370
--	------------------------	-----------------------------	---

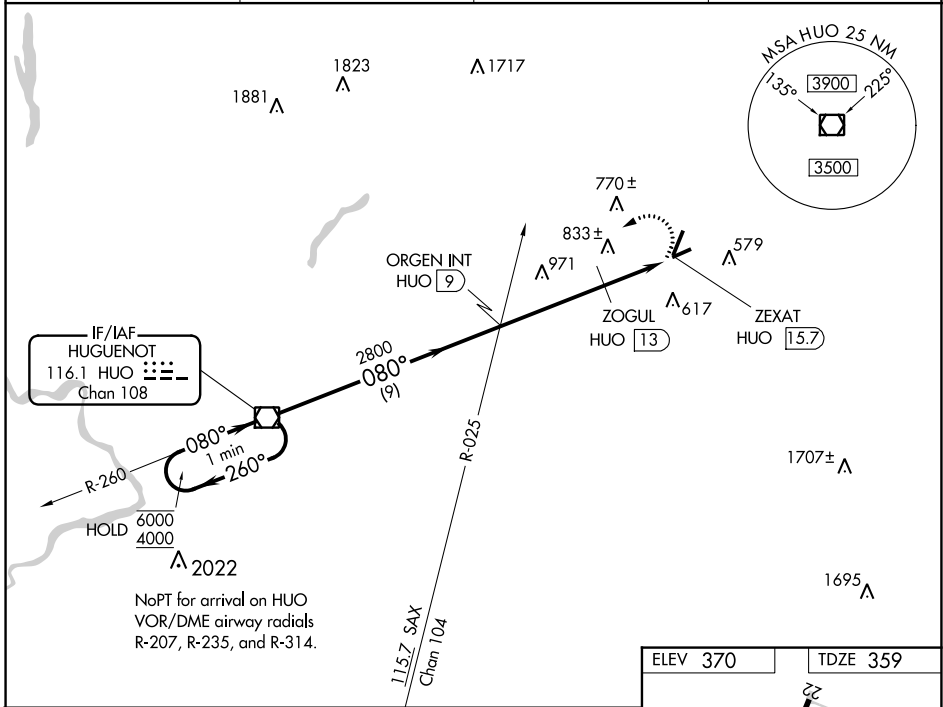
VOR RWY 8

ORANGE COUNTY (MGJ)

▼ Rwy 8 helicopter visibility reduction below 3/4 SM NA.
▲ Straight-in Rwy 8 NA at night, Circling Rwy 8, 22, 26 NA at night.

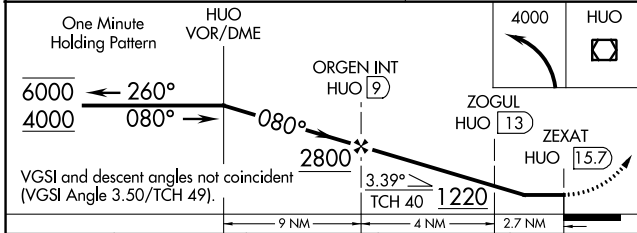
MISSED APPROACH: Climbing left turn to 4000 direct HUO VOR/DME and hold.

ASOS 119.275	NEW YORK APP CON 132.75 363.1	CLNC DEL 123.85	UNICOM 122.725 (CTAF) 0
------------------------	---	---------------------------	-----------------------------------

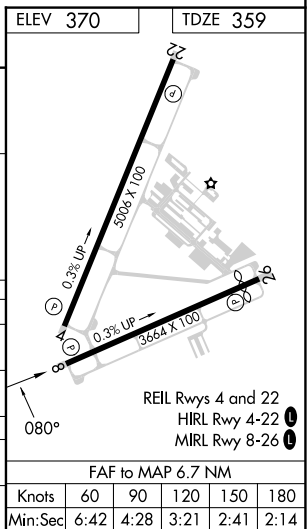


NE-2, 05 SEP 2024 to 03 OCT 2024

NE-2, 05 SEP 2024 to 03 OCT 2024



CATEGORY	A	B	C	D
S-8	1220-1 861 (900-1)	1220-1¼ 861 (900-1¼)	1220-2½ 861 (900-2½)	1220-2¾ 861 (900-2¾)
C CIRCLING	1220-1¼	850 (900-1¼)	1220-2½ 850 (900-2½)	1220-2¾ 850 (900-2¾)
ZOGUL MINIMUMS				
S-8	1160-1 801 (800-1)	1160-1¼ 801 (800-1¼)	1160-2½ 801 (800-2½)	1160-2¾ 801 (800-2¾)
C CIRCLING	1200-1¼	830 (900-1¼)	1200-2½ 830 (900-2½)	1220-2¾ 850 (900-2¾)



ELEV 370	TDZE 359				
FAF to MAP 6.7 NM					
Knots	60	90	120	150	180
Min:Sec	6:42	4:28	3:21	2:41	2:14