

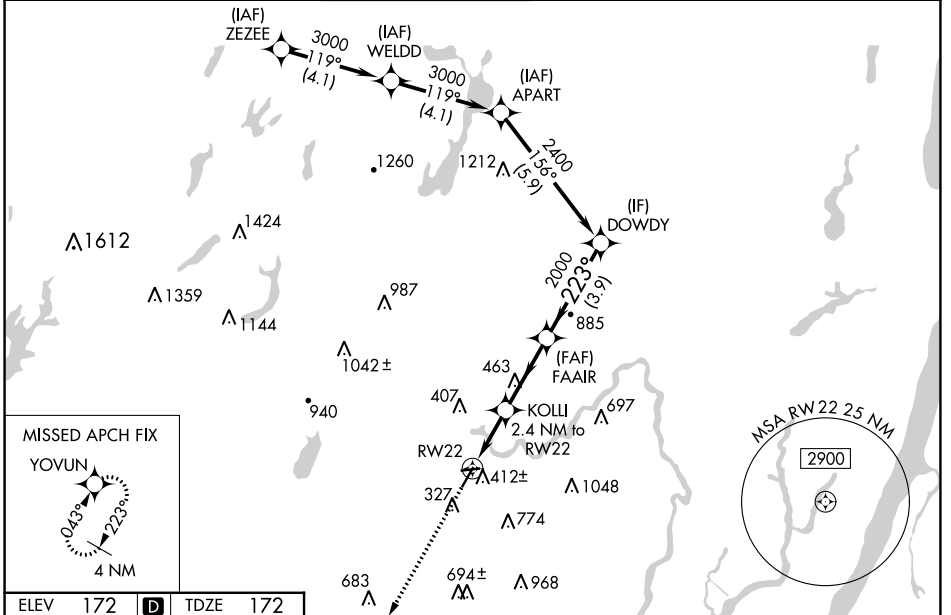
WAAS CH <b>58022</b> <b>W22A</b>	APP CRS <b>223°</b>	Rwy Idg TDZE Apt Elev	<b>4042</b> <b>172</b> <b>172</b>
--	------------------------	-----------------------------	---

# RNAV (GPS) RWY 22

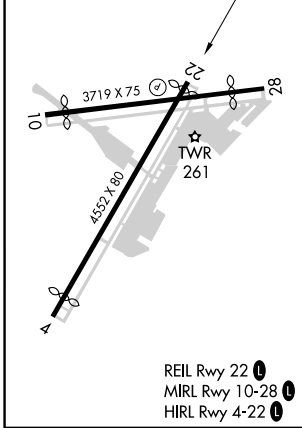
ESSEX COUNTY (CDW)

RNP APCH - GPS.		<p><b>MISSED APPROACH:</b> Climb to 2000 direct YOVUN and hold.</p>			
<b>⚠</b>	<p>Rwy 22 helicopter visibility reduction below 1 SM NA. For uncompensated Baro-VNAV systems, LNAV/VNAV NA below -15°C or above 54°C. Circling Rwy 10, 28 NA at night. Circling NA E of Rwy 4-22.</p>				

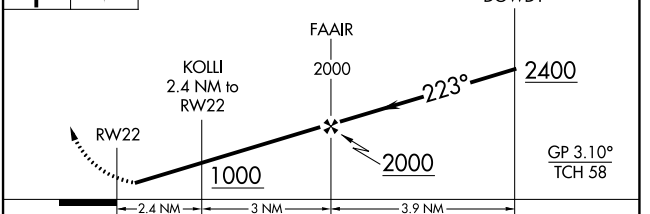
ATIS <b>135.5</b>	NEWARK APP CON <b>127.6 379.9</b>	<b>CALDWELL TOWER ★</b> <b>119.8 (CTAF) 0</b>	GND CON <b>121.9</b>	CLNC DEL <b>121.1</b>	UNICOM <b>122.95</b>
----------------------	--------------------------------------	--	-------------------------	--------------------------	-------------------------



ELEV 172	<b>D</b>	TDZE 172
----------	----------	----------



2000 YOVUN VGS1 and descent angles not coincident (VGS1 Angle 3.00/TCH 42).



CATEGORY	A	B	C	D
LPV DA	459-1 287 (300-1)			NA
LNAV/VNAV DA	610-1 <sup>3</sup> / <sub>8</sub> 438 (500-1 <sup>3</sup> / <sub>8</sub> )			NA
LNAV MDA	680-1	508 (600-1)	680-1 <sup>3</sup> / <sub>8</sub> 508 (600-1 <sup>3</sup> / <sub>8</sub> )	NA
<b>C</b> CIRCLING	960-1 788 (800-1)	1040-2 868 (900-2)	1100-2 <sup>3</sup> / <sub>4</sub> 928 (1000-2 <sup>3</sup> / <sub>4</sub> )	NA

NE-2, 05 SEP 2024 to 03 OCT 2024

NE-2, 05 SEP 2024 to 03 OCT 2024