

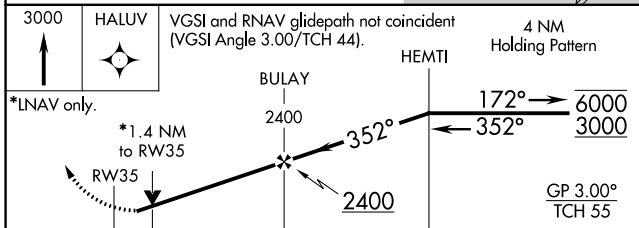
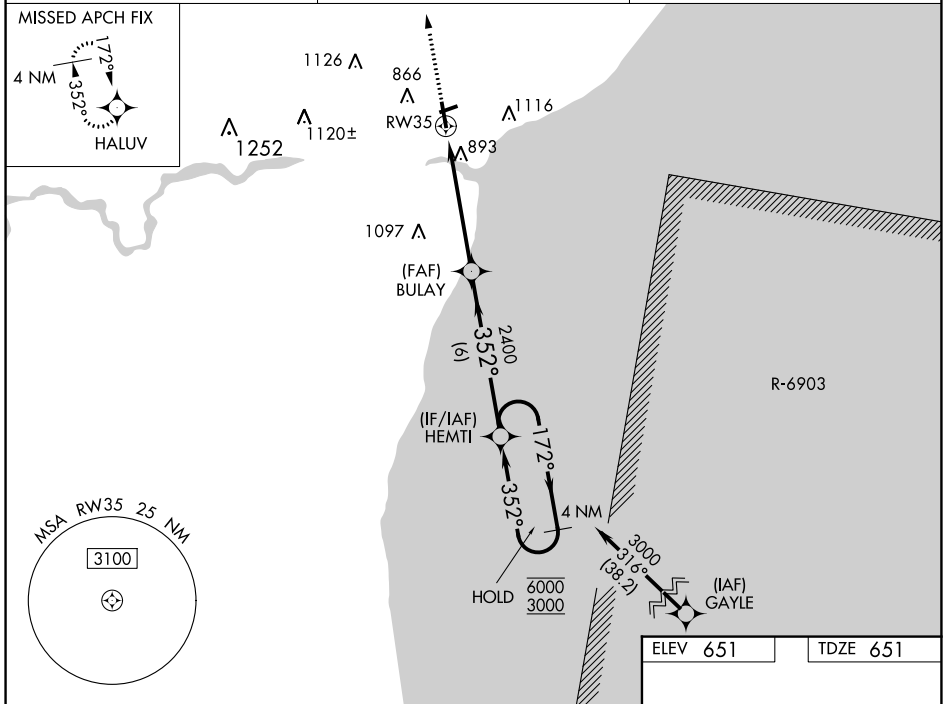
WAAS CH 82611 W35A	APP CRS 352°	Rwy Idg TDZE Apt Elev	5001 651 651
--	------------------------	-----------------------------	---

RNAV (GPS) RWY 35

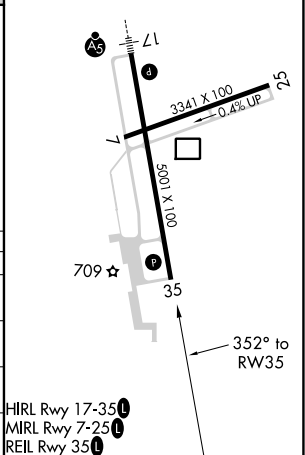
MANITOWOC COUNTY (MTW)

RNP APCH.	MISSED APPROACH: Climb to 3000 direct HALUV and hold.
-----------	---

AWOS-3PT 123.775	GREEN BAY APP CON★ 120.2 338.2	UNICOM 122.8 (CTAF)
----------------------------	--	-------------------------------



ELEV 651	TDZE 651
----------	----------



CATEGORY	A	B	C	D
LPV DA		957-7/8	306 (400-7/8)	
LNAV/VNAV DA		1199-15/8	548 (600-15/8)	
LNAV MDA	1160-1	509 (600-1)	1160-13/8	509 (600-13/8)
C CIRCLING	1200-1	549 (600-1)	1420-2 1/4 769 (800-2 1/4)	1480-2 3/4 829 (900-2 3/4)

EC-3, 05 SEP 2024 to 03 OCT 2024

EC-3, 05 SEP 2024 to 03 OCT 2024