

WAAS CH <b>97719</b> <b>W09A</b>	APP CRS <b>092°</b>	Rwy ldg TDZE Apt Elev	<b>5100</b> <b>845</b> <b>850</b>
--	------------------------	-----------------------------	---

# RNAV (GPS) RWY 9

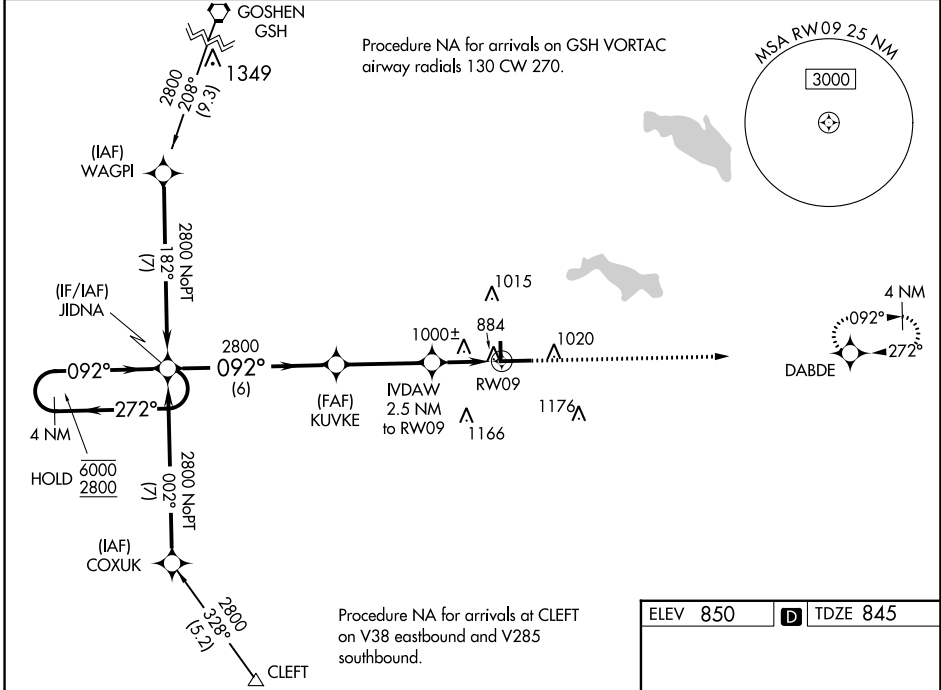
WARSAW MUNI (ASW)

RNP APCH - GPS

**⚠** Circling Rwy 18, 36 NA at night.  
Rwy 9 helicopter visibility reduction below 3/4 SM NA.  
For uncompensated Baro-VNAV systems, LNAV/VNAV NA below -16°C or above 54°C.

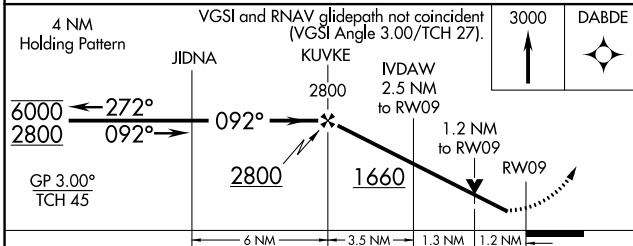
MISSED APPROACH:  
Climb to 3000 direct  
DABDE and hold.

AWOS-3 <b>121.125</b>	FORT WAYNE APP CON <b>127.2 284.6</b>	CLNC DEL <b>134.05</b>	UNICOM <b>122.7 (CTAF) 0</b>
--------------------------	--	---------------------------	---------------------------------

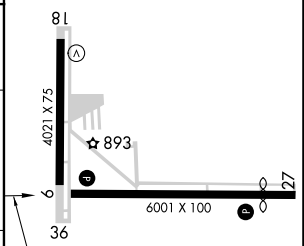


EC-2, 05 SEP 2024 to 03 OCT 2024

EC-2, 05 SEP 2024 to 03 OCT 2024



ELEV 850	<b>D</b> TDZE 845
----------	-------------------



CATEGORY	A	B	C	D
LPV DA		1095-3/4	250 (300-3/4)	
LNAV/VNAV DA		1295-1 3/8	450 (500-1 3/8)	
LNAV MDA	1260-1	415 (500-1)	1260-1 1/8	415 (500-1 1/8)
<b>C</b> CIRCLING	1340-1	490 (500-1)	1480-1 3/4 630 (700-1 3/4)	1480-2 630 (700-2)

HIRL Rwy 9-27 **0**  
MIRL Rwy 18-36 **0**  
REIL Rwy 9 and 27 **0**