

LOC I-OUT <b>111.5</b>	APP CRS <b>274°</b>	Rwy Idg <b>6500</b>
		TDZE <b>778</b>
		Apt Elev <b>778</b>

# ILS or LOC RWY 27

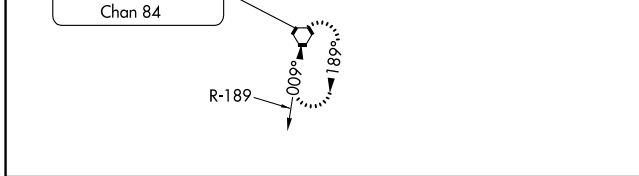
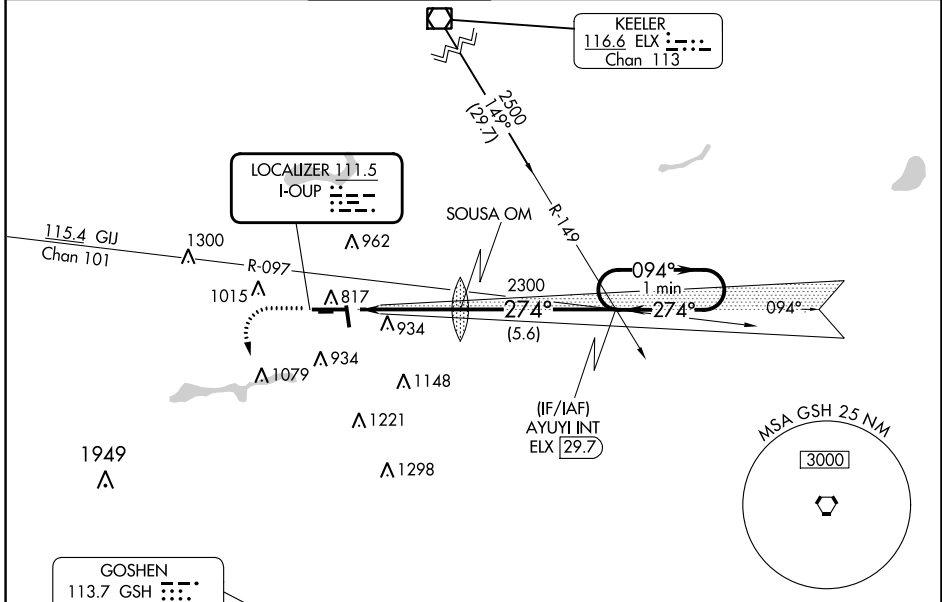
ELKHART MUNI (EKM)

**⚠** When local altimeter setting not received, use South Bend altimeter setting and increase all DA/MDA 40 feet, and increase S-LOC 27 Cat C/D visibility to RVR 5000. Circling Rwy 36 NA at night. Circling NA to Rws 8 and 26. Rwy 27 helicopter visibility reduction below RVR 4000 NA. For inop ALS, increase S-ILS 27 all Cats visibility to RVR 4500 and S-LOC 27 Cat A/B visibility to RVR 5500. For inop ALS when using South Bend altimeter setting, increase S-LOC 27 Cat A/B visibility to RVR 5500 and Cat C/D visibility to 1 1/2 SM.

**MALS**  
AS

**MISSED APPROACH:**  
Climb to 1500 then climbing left turn to 2500 direct GSH VORTAC and hold.

AWOS-3 <b>124.475</b>	SOUTH BEND APP CON * <b>118.55 257.8</b>	ELKHART TOWER * <b>119.5 (CTAF) 0</b>	GND CON <b>121.8</b>	CLNC DEL <b>121.8</b>	CLNC DEL <b>119.7</b> (When twr closed)	UNICOM <b>122.95</b>
--------------------------	---	--	-------------------------	--------------------------	---	-------------------------

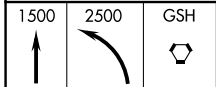


ELEV 778	<b>D</b>	TDZE 778
----------	----------	----------

MIRL Rwy 18-36  
HIRL Rwy 9-27  
REIL Rws 9, 18 and 36

FAF to MAP 4.2 NM

Knots	60	90	120	150	180
Min:Sec	4:12	2:48	2:06	1:41	1:24



CATEGORY	A	B	C	D
S-ILS 27		1066/40	288 (300-3/4)	
S-LOC 27	1220/40	442 (500-3/4)	1220/45	442 (500-7/8)
<b>C</b> CIRCLING	1240-1 462 (500-1)	1300-1 522 (600-1)	1380-1 3/4 602 (700-1 3/4)	1580-2 1/2 802 (900-2 1/2)

EC-2, 05 SEP 2024 to 03 OCT 2024

EC-2, 05 SEP 2024 to 03 OCT 2024