

| | | | |
|--|------------------------|---|-------------|
| WAAS CH 50107 W27A | APP CRS 274° | Rwy Idg TDZE 778 Apt Elev 778 | 6500 |
|--|------------------------|---|-------------|

RNAV (GPS) RWY 27

ELKHART MUNI (EKM)

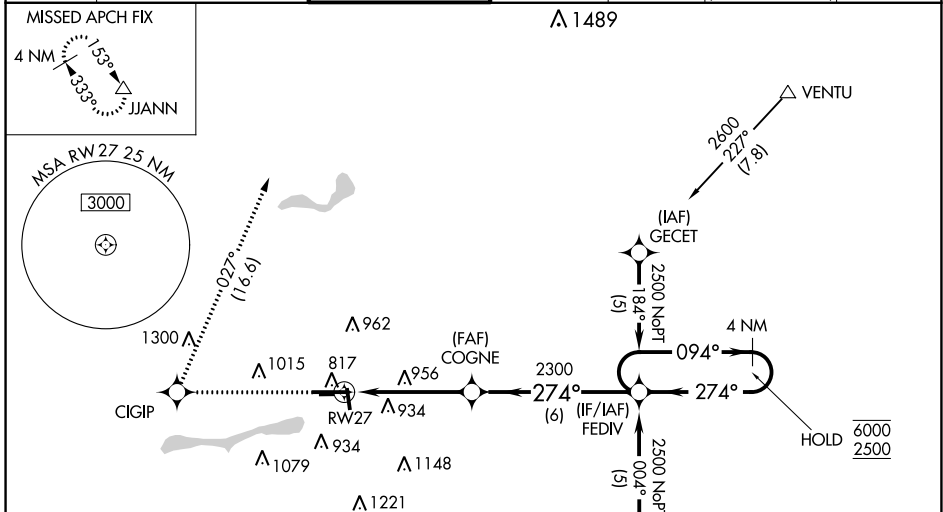
RNP APCH - GPS.

⚠ Circling NA to Rwy 8 and 26. Circling Rwy 36 NA at night. Baro-VNAV and VDP NA when using South Bend altimeter setting. Rwy 27 helicopter visibility reduction below RVR 4000 NA. For uncompensated Baro-VNAV systems, LNAV/VNAV NA below -16°C or above 54°C. When local altimeter setting not received, use South Bend altimeter setting: increase LPV DA to 1111 feet; increase LNAV/VNAV DA to 1261 feet; increase all MDA 40 feet and LNAV visibility Cat C/D to RVR 5500, Circling Cat D visibility ¼ SM. For inop ALS, increase LPV all Cats visibility to RVR 4500, LNAV/VNAV all Cats visibility to 1¾ SM, LNAV Cat A/B visibility to RVR 5500 and Cat C/D to 1¾ SM. For inop ALS when using South Bend altimeter setting, increase LNAV/VNAV all Cats visibility to 1¾ SM and LNAV Cat A/B to RVR 5500.

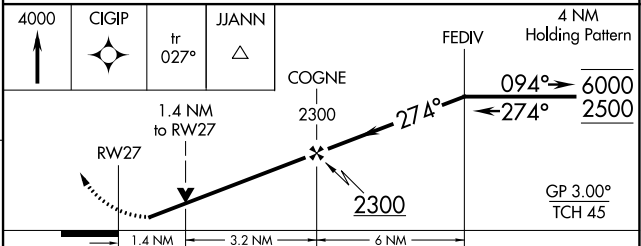
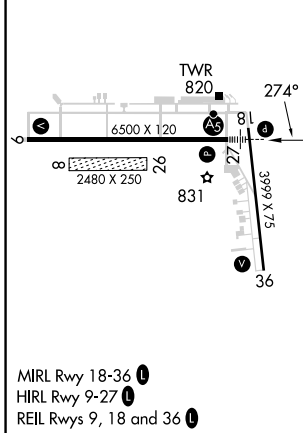


MISSED APPROACH:
Climb to 4000 direct CIGIP and on track 027° to JJANN and hold.

| | | | | | | |
|--------------------------|---|--|-------------------------|--------------------------|---|-------------------------|
| AWOS-3 124.475 | SOUTH BEND APP CON * 118.55 257.8 | ELKHART TOWER * 119.5 (CTAF) 0 | GND CON 121.8 | CLNC DEL 121.8 | CLNC DEL 119.7 (When twr closed) | UNICOM 122.95 |
|--------------------------|---|--|-------------------------|--------------------------|---|-------------------------|



| | | |
|----------|----------|----------|
| ELEV 778 | D | TDZE 778 |
|----------|----------|----------|



| CATEGORY | A | B | C | D |
|-------------------|-----------------------|-----------------------|-------------------------|-------------------------|
| LPV DA | | 1071/40 | 293 (300-¾) | |
| LNAV/VNAV DA | | 1221/50 | 443 (500-1) | |
| LNAV MDA | 1260/40 | 482 (500-¾) | 1260/50 | 482 (500-1) |
| C CIRCLING | 1260-1 482 (500-1) | 1300-1 522 (600-1) | 1380-1¾ 602 (700-1¾) | 1580-2½ 802 (900-2½) |

EC-2, 05 SEP 2024 to 03 OCT 2024

EC-2, 05 SEP 2024 to 03 OCT 2024