

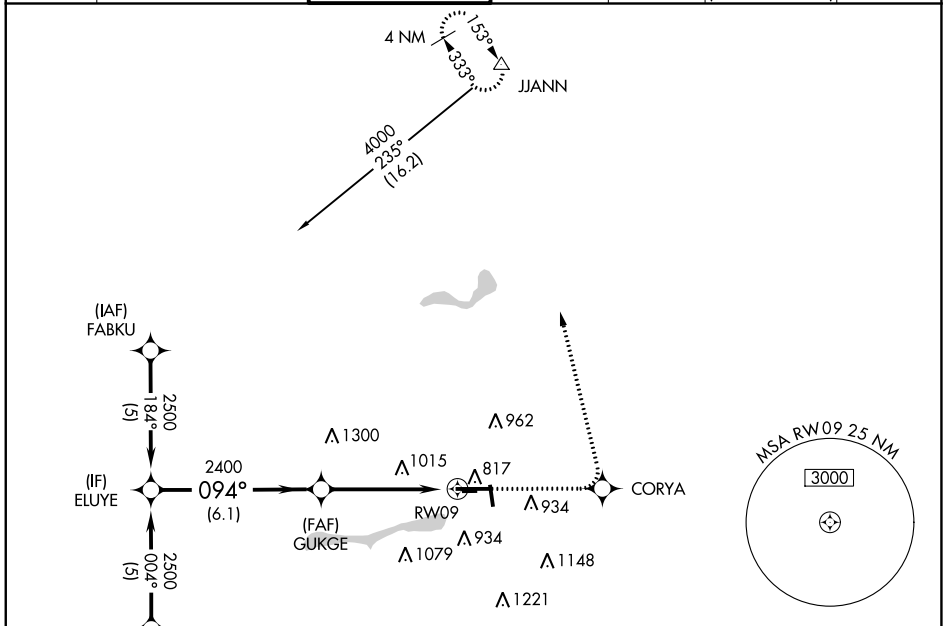
APP CRS	Rwy Idg	6500
094°	TDZE	777
	Apt Elev	778

RNAV (GPS) RWY 9

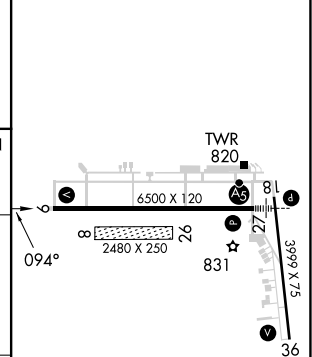
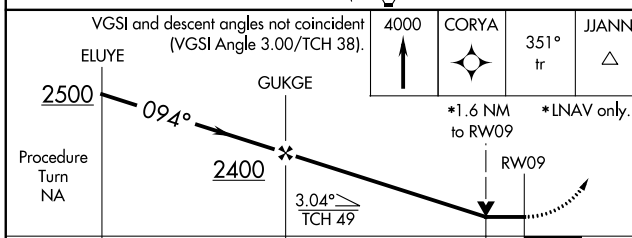
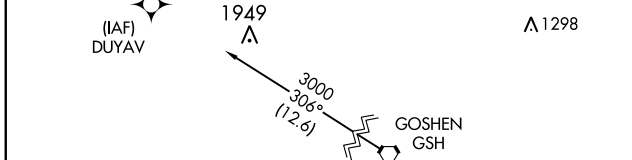
ELKHART MUNI (EKM)

RNP APCH.			MISSED APPROACH: Climb to 4000 direct CORYA and via 351° track to JJANN and hold.	
<p>▼ VDP NA when using South Bend altimeter setting. Circling Rwy 36 NA at night. Circling NA to Rwy 8 and 26. Rwy 9 helicopter visibility reduction below 3/4 SM NA. When local altimeter setting not received, use South Bend altimeter setting and increase all MDA 40 feet.</p>				

AWOS-3	SOUTH BEND APP CON *	ELKHART TOWER *	GND CON	CLNC DEL	CLNC DEL	UNICOM
124.475	118.55 257.8	119.5 (CTAF)	121.8	121.8	119.7 (When twr closed)	122.95



ELEV	778	TDZE	777
------	------------	------	------------



CATEGORY	A	B	C	D
LNVA MDA	1340-1	563 (600-1)	1340-1 1/2 563 (600-1 1/2)	1340-1 3/4 563 (600-1 3/4)
C CIRCLING	1340-1	562 (600-1)	1380-1 3/4 602 (700-1 3/4)	1580-2 1/2 802 (900-2 1/2)

MIRL Rwy 18-36
HIRL Rwy 9-27
REIL Rwys 9, 18 and 36

EC-2, 05 SEP 2024 to 03 OCT 2024

EC-2, 05 SEP 2024 to 03 OCT 2024