

# SCRAM SIX DEPARTURE (RNAV)

**TOP ALTITUDE:**  
3000



NOTE: Chart not to scale.

## DEPARTURE ROUTE DESCRIPTION

Climb on heading assigned by ATC, expect RADAR vectors to POOCH, then on track 240° to SCRAM, thence. . . .

. . . . as depicted. Maintain 3000, expect clearance to filed altitude within ten (10) minutes after departure.

GLANC TRANSITION (SCRAM6.GLANC):

NE-3, 05 SEP 2024 to 03 OCT 2024

- AWOS-3
- 125.225
- CLNC DEL
- 120.5
- 118.55 (When twr closed)
- GND CON
- 120.5
- LEESBURG TOWER \*
- 127.5 (CTAF)
- UNICOM
- 122.975
- POTOMAC DEP CON
- 125.05 350.2

NOTE: RNAV 1.

NOTE: RADAR required.

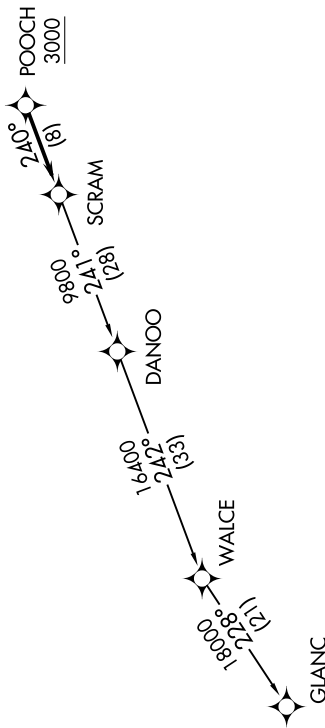
NOTE: DME/DME/IRU or GPS required.

NOTE: Turbo-jets only.

NOTE: Takeoff Rwy 35 requires a climb to 1200 on heading 353° before proceeding on the ATC assigned heading for obstacle avoidance.

TAKEOFF MINIMUMS:

Rwys 17, 35: Standard



NE-3, 05 SEP 2024 to 03 OCT 2024

# SCRAM SIX DEPARTURE (RNAV)

(SCRAM6.SCRAM) 31DEC20