

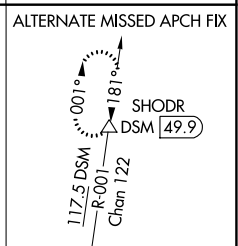
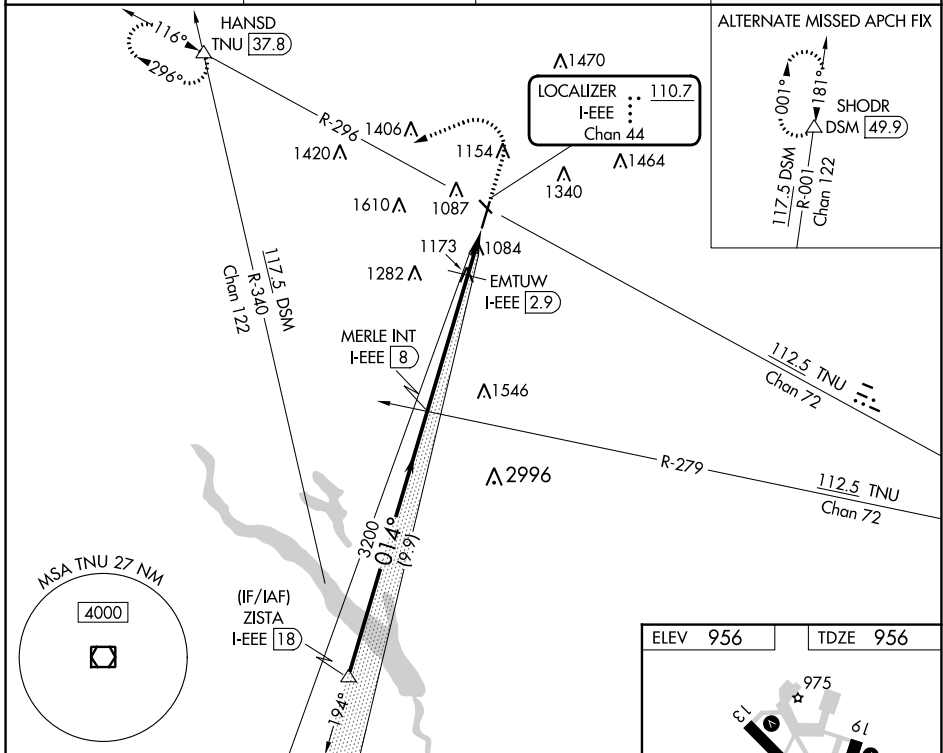
LOC/DME I-EEE <b>110.7</b> Chan 44	APP CRS <b>014°</b>	Rwy Idg TDZE <b>956</b> Apt Elev <b>956</b>
--	------------------------	---

# ILS or LOC RWY 1

AMES MUNI (AMW)

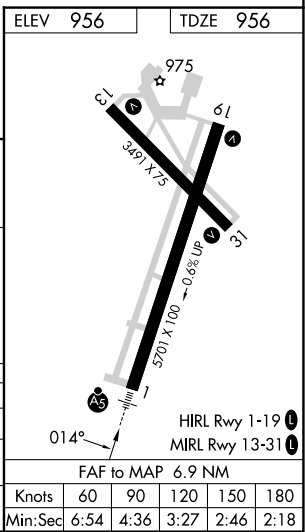
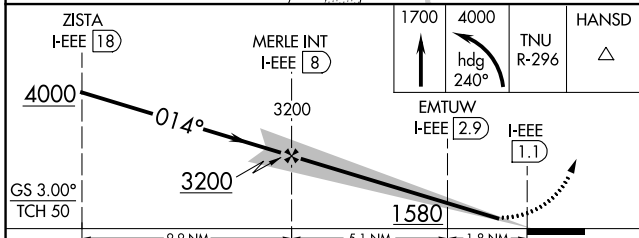
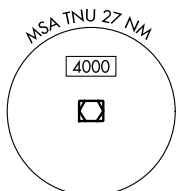
DME required.	MALSR	MISSED APPROACH: Climb to 1700 then climbing left turn to 4000 on heading 240° and TNU VOR/DME R-296 to HANSD INT/37.8 DME and hold, continue climb-in-hold to 4000.
<p>NA For inop ALS increase S-LOC 1 Cat C/D visibility to 1 3/8 SM.</p> <p>-27°C</p>		

ASOS <b>132.025</b>	DES MOINES APP CON <b>123.9 307.15</b>	CLNC DEL <b>126.0</b>	UNICOM <b>122.7 (CTAF)</b>
------------------------	---	--------------------------	-------------------------------



NC-3, 05 SEP 2024 to 03 OCT 2024

NC-3, 05 SEP 2024 to 03 OCT 2024



CATEGORY	A	B	C	D
S-ILS 1	1206-1/2		250 (300-1/2)	
S-LOC 1	1440-1/2	484 (500-1/2)	1440-1 484 (500-1)	
CIRCLING	1440-1 484 (500-1)	1460-1 504 (600-1)	1640-2 684 (700-2)	1960-3 1004 (1100-3)

ELEV	956	TDZE	956		
Knots	60	90	120	150	180
Min:Sec	6:54	4:36	3:27	2:46	2:18