

| | | | |
|------------|-------------|----------|-------------|
| NDB PVC | APP CRS | Rwy Idg | 3502 |
| 389 | 247° | TDZE | 8 |
| | | Apt Elev | 8 |

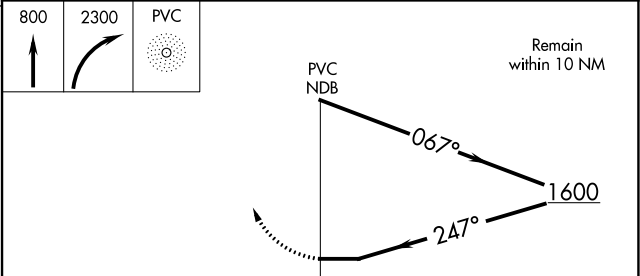
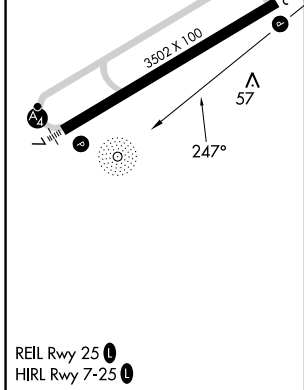
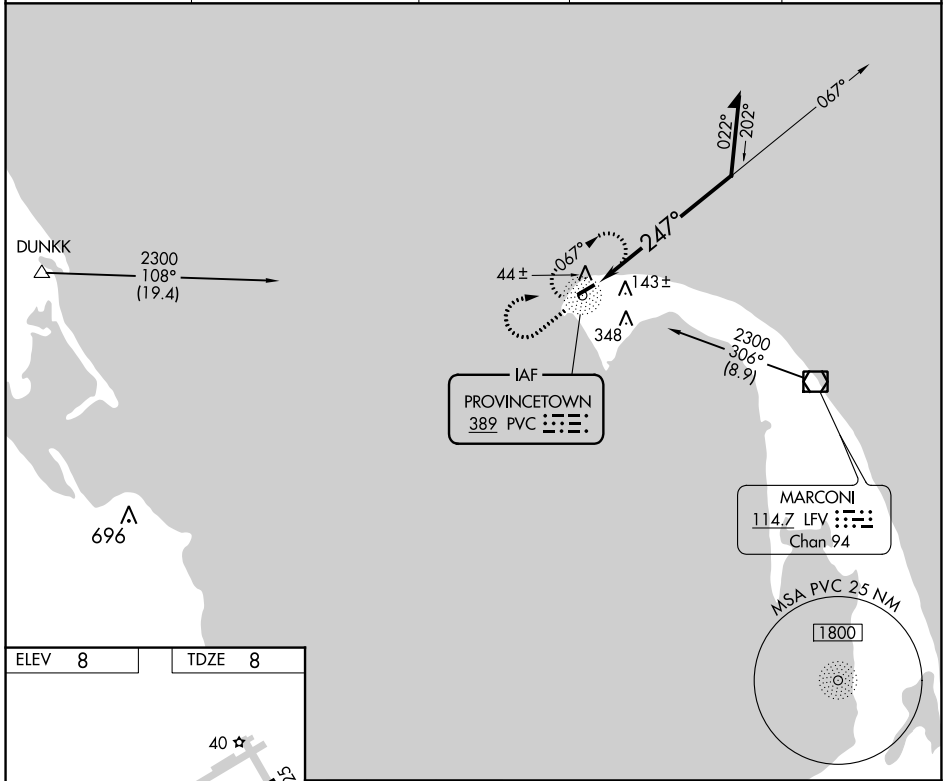
NDB RWY 25

PROVINCETOWN MUNI (PVC)

⚠ Rwy 25 helicopter visibility reduction below 1 SM NA. Straight-in Rwy 25 NA at night, Circling Rwy 25 NA at night. When local altimeter setting not received, use Hyannis altimeter setting and increase all MDA 80 feet.

MISSED APPROACH: Climb to 800 then climbing right turn to 2300 direct PVC NDB and hold.

| | | | | |
|----------------|----------------|---------------|---------------------|------------------------|
| AWOS-3PT | BOSTON APP CON | CLNC DEL | UNICOM | |
| 119.275 | 118.2 | 120.65 | 122.8 (CTAF) | 122.85 0 |



| CATEGORY | A | B | C | D |
|-------------------|-------------|-------------|---|----|
| S-25 | 500-1 | 492 (500-1) | | NA |
| C CIRCLING | 500-1 | 660-1 | | NA |
| | 492 (500-1) | 652 (700-1) | | |

NE-1, 05 SEP 2024 to 03 OCT 2024

NE-1, 05 SEP 2024 to 03 OCT 2024