

WAAS CH <b>58010</b> W <b>23A</b>	APP CRS <b>231°</b>	Rwy Idg <b>5572</b> TDZE <b>471</b> Apt Elev <b>480</b>
---	------------------------	---

# RNAV (GPS) RWY 23

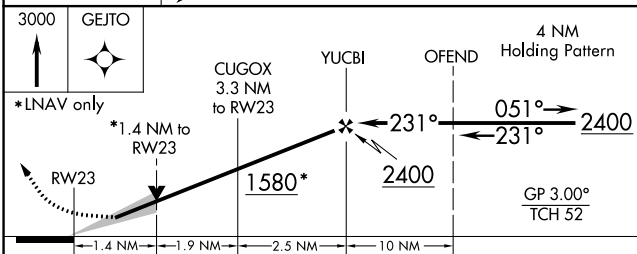
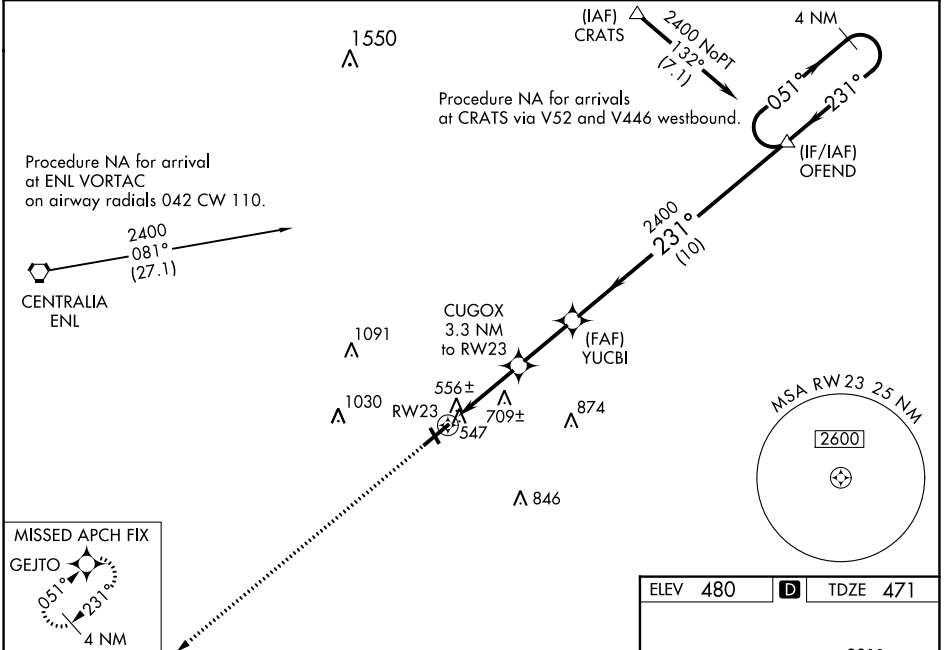
MOUNT VERNON (MVN)

**⚠** For uncompensated Baro-VNAV systems, LNAV/VNAV NA below -15° C (5°F) or above 48° C (118°F). DME/DME RNP-0.3 NA. When local altimeter setting not received, use Centralia altimeter setting: increase LPV DA to 766 feet; increase LNAV VNAV DA to 918 feet; increase all MDAs 60 feet and LNAV visibility Cat C/D and Circling Cat C ¼ SM. For inop MALSRL, when using Centralia altimeter setting, increase LPV all Cats visibility to 1 mile. VDP and Baro-VNAV NA when using Centralia altimeter setting. Circling to Rwy 15/33 NA at night.

**MALSRL**

**MISSED APPROACH:**  
Climb to 3000 direct GEJTO and hold.

<b>AWOS-3PT</b> <b>118.2</b>	<b>KANSAS CITY CENTER</b> <b>127.7 351.825</b>	<b>UNICOM</b> <b>123.0 (CTAF) 0</b>
---------------------------------	---	--



ELEV 480	<b>D</b>	TDZE 471
----------	----------	----------

**HIRL** Rwy 5-23 **0**

**MIRS** Rwy 15-33 **0**

CATEGORY	A	B	C	D
LPV DA		721-½	250 (300-½)	
LNAV/VNAV DA		873-1	402 (400-1)	
LNAV MDA	960-½ 489 (500-½)		960-¾ 489 (500-¾)	960-1 489 (500-1)
CIRCLING	1000-1 520 (600-1)		1140-1¾ 660 (700-1¾)	1380-3 900 (900-3)

EC-3, 05 SEP 2024 to 03 OCT 2024

EC-3, 05 SEP 2024 to 03 OCT 2024