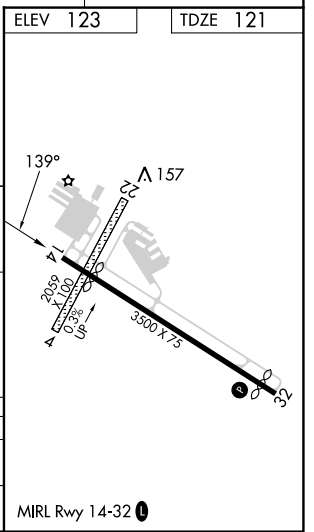
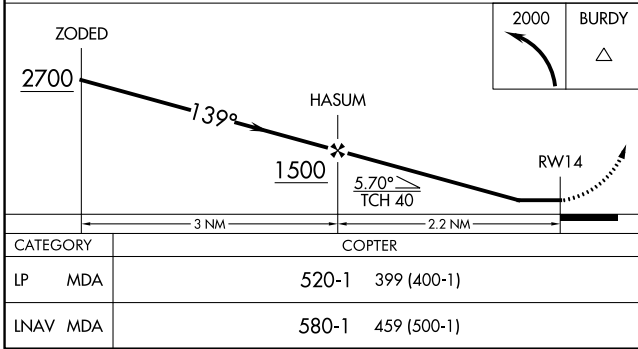
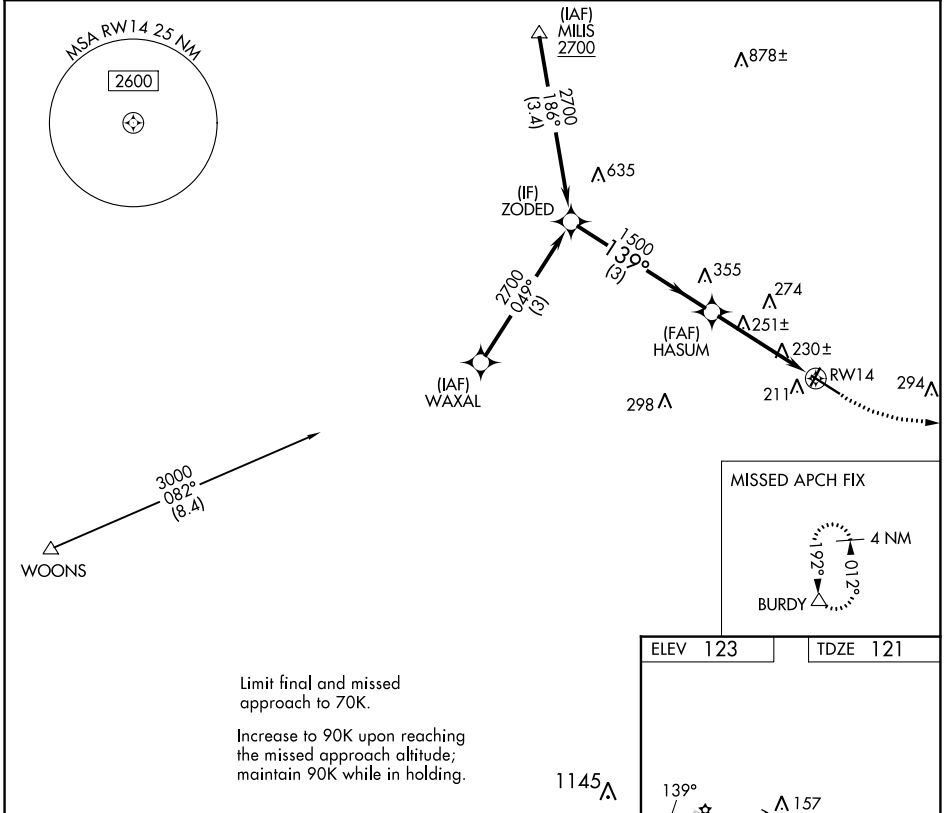


WAAS CH 50444 W14B	APP CRS 139°	Rwy ldg 2991
		TDZE 121
		Apt Elev 123

COPTER RNAV (GPS) Y RWY 14

MANSFIELD MUNI (1B9)

RNP APCH - GPS.		MISSED APPROACH: Climbing left turn to 2000 direct BURDY and hold.	
Procedure NA at night. Use Taunton altimeter setting.			
AWOS-3PT 118.675	TAN ASOS 132.675	BOSTON APP CON 124.1	UNICOM 123.0 (CTAF)



NE-1, 05 SEP 2024 to 03 OCT 2024

NE-1, 05 SEP 2024 to 03 OCT 2024