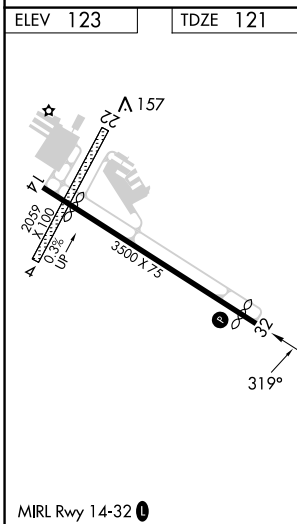
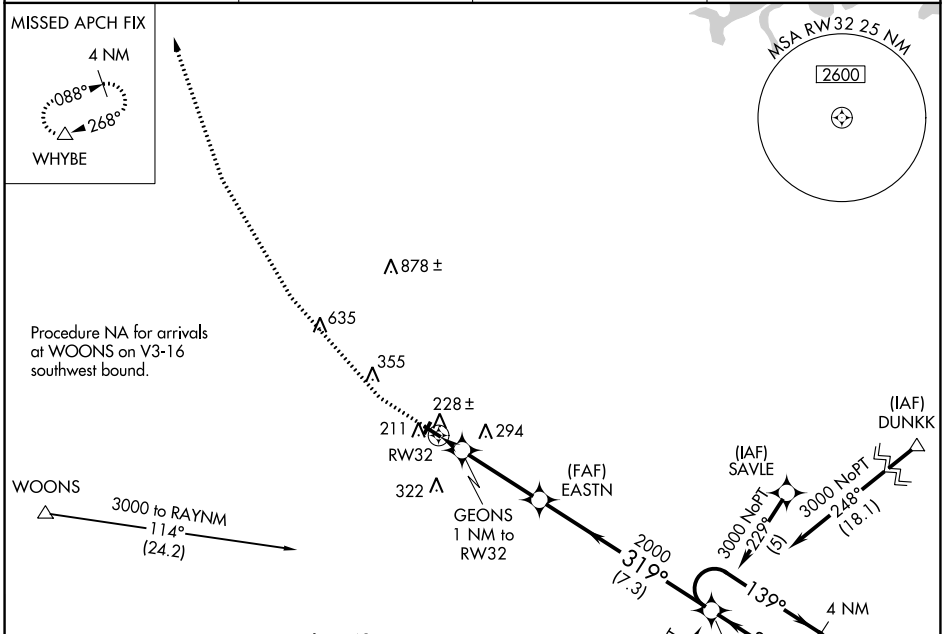


WAAS CH 97644 W32A	APP CRS 319°	Rwy Idg TDZE Apt Elev	3263 121 123
--	------------------------	-----------------------------	---

RNAV (GPS) RWY 32

MANSFIELD MUNI (1B9)

RNP APCH - GPS.		MISSED APPROACH: Climb to 700 then climbing right turn to 3000 direct WHYBE and hold.	
<p>NA Circling NA to Rwys 4 and 22. Procedure NA at night. Rwy 32 helicopter visibility reduction below 1 SM NA. Use Taunton altimeter setting.</p>			
AWOS-3PT 118.675	TAN ASOS 132.675	BOSTON APP CON 124.1	UNICOM 123.0 (CTAF)



Procedure NA for arrivals at AVONN on V146 northwest bound.

700	3000	WHYBE	VGSI and RNAV glidepath not coincident (VGSI Angle 4.00/TCH 38).	4 NM Holding Pattern
↑	↻	△		
RAYNM		RAYNM		
EASTN		EASTN		
GEONS 1 NM to RW32		GEONS 1 NM to RW32		
RW32		RW32		
600		600		
2000		2000		
319°		319°		
139°		139°		
6000		6000		
3000		3000		
GP 4.00° TCH 55		GP 4.00° TCH 55		
1 NM		3.3 NM		7.3 NM
CATEGORY	A	B	C	D
LPV DA	452-1	331 (400-1)		NA
LNAV MDA	520-1	399 (400-1)		NA
C CIRCLING	600-1 477 (500-1)	640-1 517 (600-1)		NA

NE-1, 05 SEP 2024 to 03 OCT 2024

NE-1, 05 SEP 2024 to 03 OCT 2024