

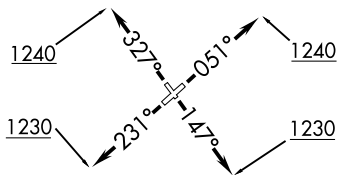
(MONKZ5.MONKZ) 21112  
**MONKZ FIVE DEPARTURE (RNAV)**

AL-5324 (FAA)

WAUKEGAN NTL (UGN)  
 CHICAGO/WAUKEGAN, ILLINOIS

**TOP ALTITUDE:  
 3000**

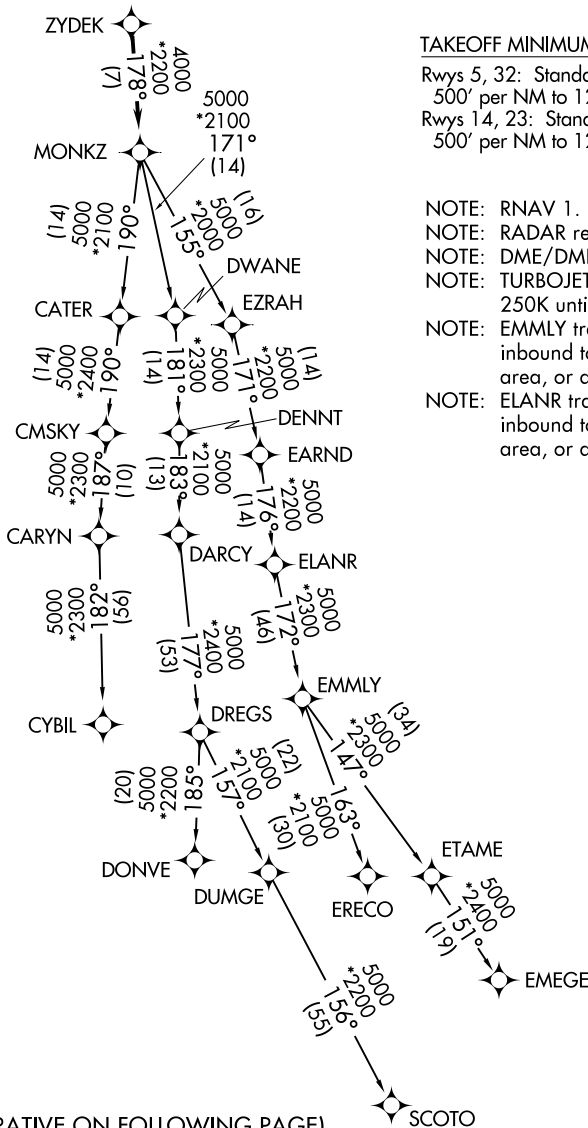
ATIS  
 132.4  
 GND CON  
 121.65  
 WAUKEGAN TOWER★  
 120.05 273.55  
 DEP CON  
 120.55



TAKEOFF MINIMUMS

Rwys 5, 32: Standard with minimum climb of 500' per NM to 1240.  
 Rwys 14, 23: Standard with minimum climb of 500' per NM to 1230.

- NOTE: RNAV 1.
- NOTE: RADAR required.
- NOTE: DME/DME/IRU or GPS required.
- NOTE: TURBOJET departures maintain 250K until advised by ATC.
- NOTE: EMMLY transition: For aircraft inbound to Indianapolis Terminal area, or as assigned by ATC.
- NOTE: ELANR transition: For aircraft inbound to Cincinnati Terminal area, or as assigned by ATC.



(NARRATIVE ON FOLLOWING PAGE)

NOTE: Chart not to scale.

**MONKZ FIVE DEPARTURE (RNAV)**  
 (MONKZ5.MONKZ) 01FEB18

CHICAGO/WAUKEGAN, ILLINOIS  
 WAUKEGAN NTL (UGN)

EC-3, 05 SEP 2024 to 03 OCT 2024

EC-3, 05 SEP 2024 to 03 OCT 2024