

LOC I-IMT <b>111.5</b>	APP CRS <b>190°</b>	Rwy Idg <b>6376</b>
		TDZE <b>1182</b>
		Apt Elev <b>1182</b>

# LOC/DME BC RWY 19

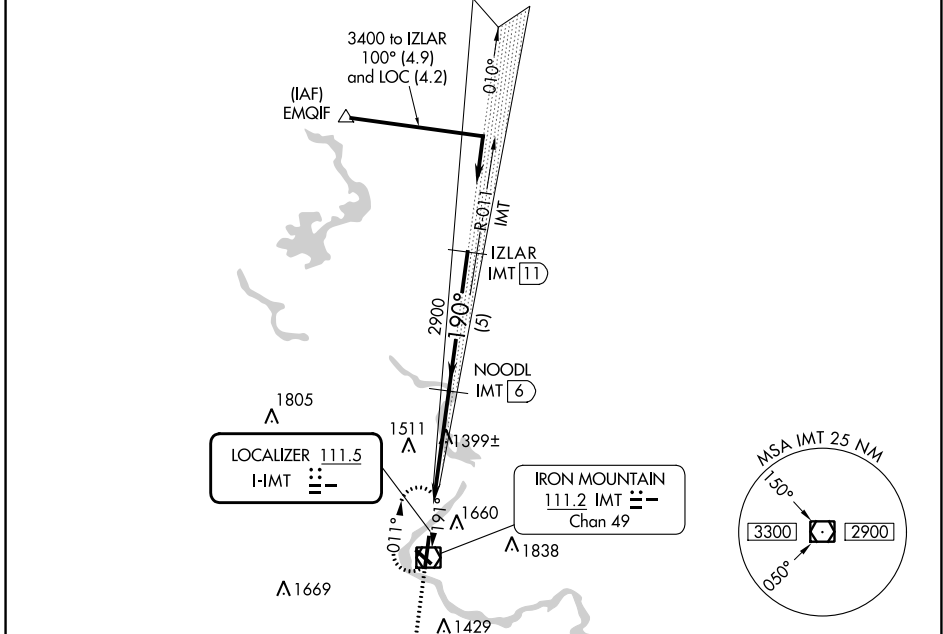
FORD (IMT)

**DME required.**

**⚠** Circling NA northeast of Rwy 19 and 31. DME from IMT VOR/DME. Simultaneous reception of I-IMT and IMT DME required. Rwy 19 helicopter visibility reduction below 1 SM NA. Straight-in Rwy 19 NA at night. Circling Rwy 13, 19, 31 NA at night. When local altimeter setting not received, use Escanaba altimeter setting and increase all MDA 180 feet; increase S-19 Cat C/D visibilities ½ SM and Circling Cat C/D visibility ¾ SM.

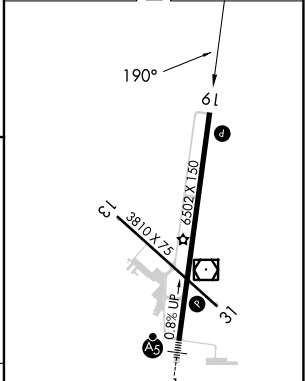
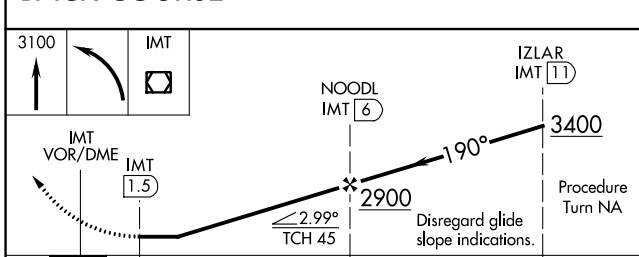
**MISSED APPROACH:** Climb to 3100 then left turn direct IMT VOR/DME and hold.

ASOS <b>119.025</b>	MINNEAPOLIS CENTER <b>121.25 322.5</b>	UNICOM <b>122.8 (CTAF) 0</b>
------------------------	---	---------------------------------



ELEV 1182	TDZE 1182
-----------	-----------

## BACK COURSE



CATEGORY	A	B	C	D
S-19	1660-1 478 (500-1)		1660-1 3/8 478 (500-1 3/8)	
<b>C</b> CIRCLING	1660-1 478 (500-1)	1780-1 598 (600-1)	1780-1 1/2 598 (600-1 1/2)	1840-2 658 (700-2)

MIRL Rwy 13-31

HIRL Rwy 1-19

REIL Rwy 19 and 31

EC-1, 05 SEP 2024 to 03 OCT 2024

EC-1, 05 SEP 2024 to 03 OCT 2024