


WAAS CH <b>77811</b> <b>W01A</b>	APP CRS <b>010°</b>	Rwy Idg <b>6502</b> TDZE <b>1133</b> Apt Elev <b>1182</b>
----------------------------------------	------------------------	-----------------------------------------------------------------

# RNAV (GPS) RWY 1


FORD (IMT)

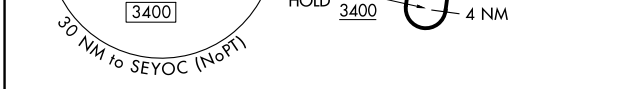
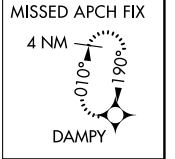
RNP APCH - GPS.





**⚠** Circling NA northeast of Rwy 19 and 31. Circling Rwy 13, 19, 31 NA at night. Rwy 1 helicopter visibility reduction below 3/4 SM NA. Inop table does not apply to LPV. For uncompensated Baro-VNAV systems, LNAV/VNAV NA below -17°C or above 54°C. For inop ALS, increase LNAV Cat A and B visibility 1/4 SM.

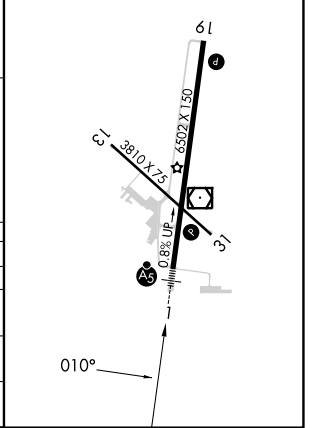
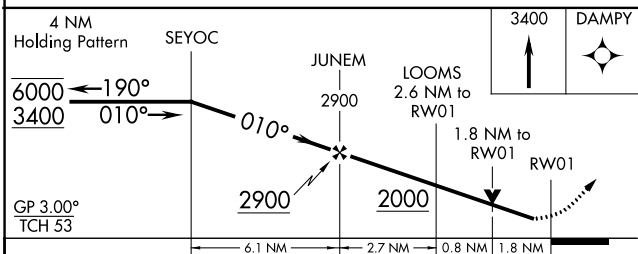
MALSRL 

MISSED APPROACH: Climb to 3400 direct DAMPY and hold.

ASOS <b>119,025</b>	MINNEAPOLIS CENTER <b>121.25 322.5</b>	UNICOM <b>122.8 (CTAF)</b> 
------------------------	-------------------------------------------	-----------------------------------------------------------------------------------------------------------------



ELEV <b>1182</b> 	TDZE <b>1133</b>
MIRL Rwy 13-31 	
HIRL Rwy 1-19 	
REIL Rwys 19 and 31 	



CATEGORY	A	B	C	D
LPV DA	1383-3/4 250 (300-3/4)			
LNAV/VNAV DA	1806-2 673 (700-2)			
LNAV MDA	1760-3/4	627 (600-3/4)	1760-1 1/4 627 (600-1 1/4)	1760-1 1/2 627 (600-1 1/2)
<b>C</b> CIRCLING	1760-1 578 (600-1)	1780-1 598 (600-1)	1780-1 3/4 598 (600-1 3/4)	1840-2 658 (700-2)

EC-1, 05 SEP 2024 to 03 OCT 2024

EC-1, 05 SEP 2024 to 03 OCT 2024