

WAAS CH 62904 W25A	APP CRS 245°	Rwy Idg TDZE Apt Elev	5000 993 993
--	------------------------	-----------------------------	---

RNAV (GPS) RWY 25

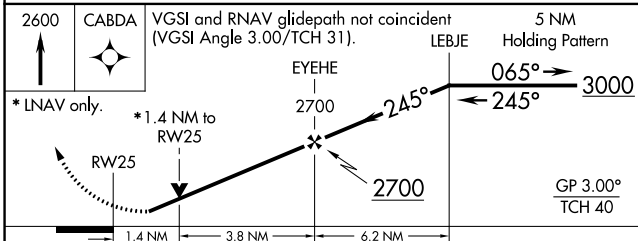
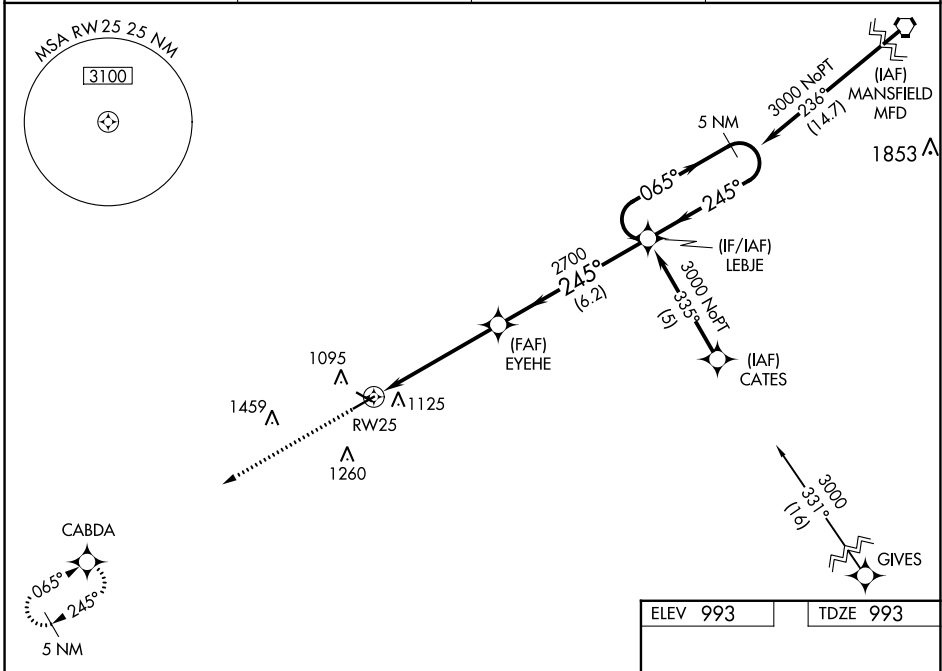
MARION MUNI (MNN)

RNP APCH.

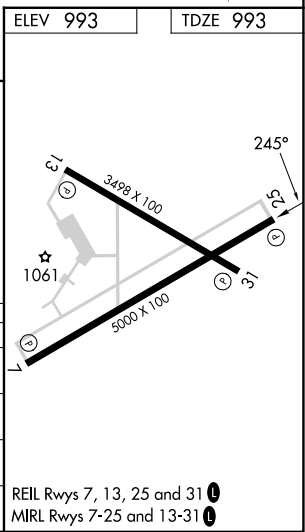
⚠ For uncompensated Baro-VNAV systems, LNAV/VNAV NA below -16°C (4°F) or above 54°C (130°F). Baro-VNAV and VDP NA when using Ohio State University altimeter setting. Rwy 25 helicopter visibility reduction below 3/4 SM NA. When local altimeter setting not received, use Ohio State University altimeter setting and increase LPV DA to 1421 feet, increase LNAV/VNAV DA to 1530 feet; increase all MDAs 100 feet and visibility Cat C/D 1/4 SM.

MISSED APPROACH:
Climb to 2600 direct
CABDA and hold.

ASOS 119.975	CLEVELAND APP CON * 128.35 360.65	CLNC DEL 126.8	UNICOM 122.8 (CTAF) 0
------------------------	---	--------------------------	---------------------------------



CATEGORY	A	B	C	D
LPV DA		1334-1 1/4	341 (400-1 1/4)	
LNAV/VNAV DA		1443-1 1/2	450 (500-1 1/2)	
LNAV MDA	1460-1	467 (500-1)	1460-1 5/8	467 (500-1 5/8)
CIRCLING	1480-1 487 (500-1)	1500-1 507 (600-1)	1700-2 707 (800-2)	1820-2 3/4 827 (900-2 3/4)



REIL Rwy 7, 13, 25 and 31 **0**
MIRL Rwy 7-25 and 13-31 **0**

EC-2, 05 SEP 2024 to 03 OCT 2024

EC-2, 05 SEP 2024 to 03 OCT 2024