

WAAS CH 40106 W06A	APP CRS 056°	Rwy Idg 5006 TDZE 310 Apt Elev 310
----------------------------------------	------------------------	---------------------------------------------------------------

RNAV (GPS) RWY 6

CRISP COUNTY-CORDELE (CKF)

RNP APCH-GPS.

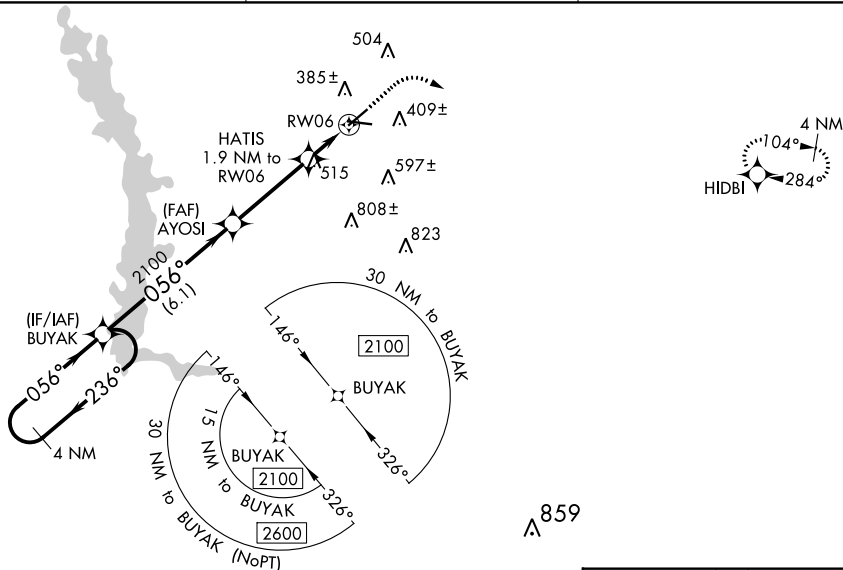
⚠ For uncompensated Baro-VNAV systems, LNAV/VNAV NA below -15°C or above 54°C. Rwy 6 helicopter visibility reduction below 3/4 SM NA. Straight-in Rwy 6 NA at night, Circling Rwy 6, 24, 28 NA at night.

MISSED APPROACH: Climb to 800 then climbing right turn to 2100 direct HIDBI and hold.

AWOS-3PT
119.325

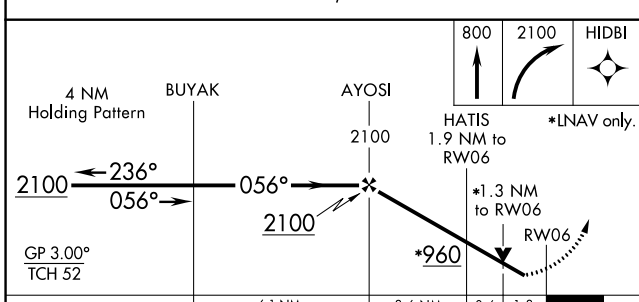
JACKSONVILLE CENTER
125.75 363.075

UNICOM
123.050 (CTAF) **📻**



SE-4, 05 SEP 2024 to 03 OCT 2024

SE-4, 05 SEP 2024 to 03 OCT 2024



ELEV 310	TDZE 310
----------	----------

CATEGORY	A	B	C	D
LPV DA	573-1		263 (300-1)	
LNAV/VNAV DA	647-1		337 (300-1)	
LNAV MDA	780-1	470 (500-1)	780-1 ³ / ₈	470 (500-1 ³ / ₈)
C CIRCLING	820-1	510 (600-1)	1080-2 ¹ / ₄ 770 (800-2 ¹ / ₄)	1160-2 ³ / ₄ 850 (900-2 ³ / ₄)

