

WAAS CH <b>70732</b> <b>W23A</b>	APP CRS <b>227°</b>	Rwy Idg TDZE <b>1258</b> Apt Elev <b>1278</b>
--	------------------------	---

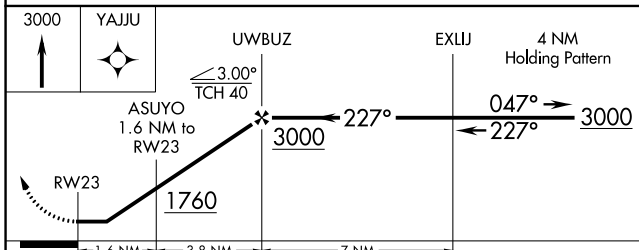
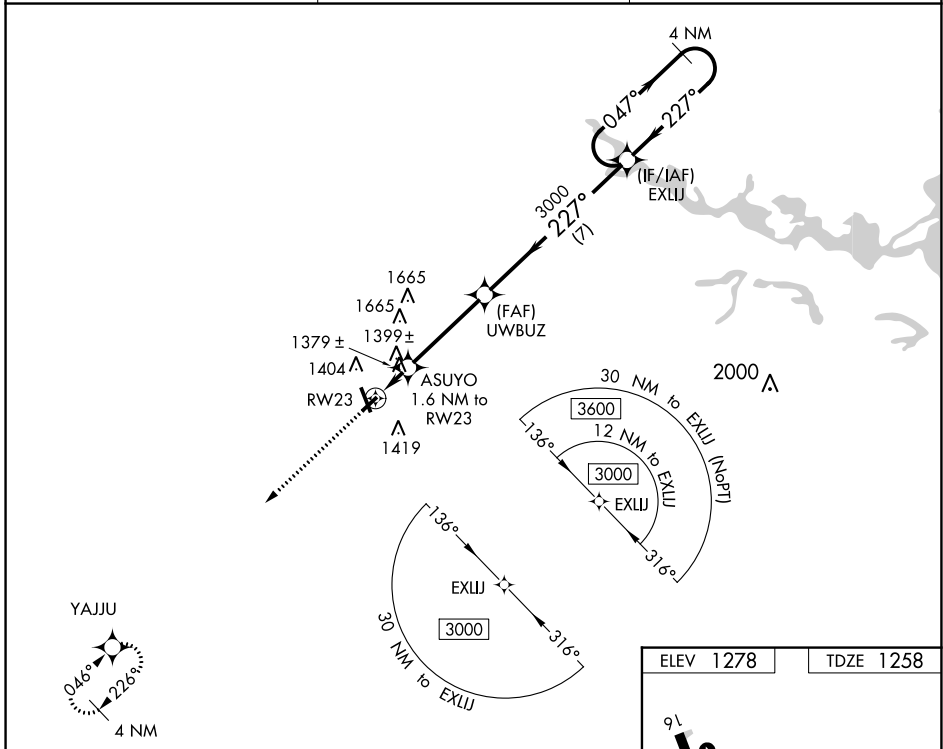
# RNAV (GPS) RWY 23

MARSHFIELD MUNI (MFI)

**⚠** DME/DME RNP-0.3 NA. Helicopter visibility reduction below 3/4 SM NA. When local altimeter setting not received, use Central Wisconsin altimeter setting and increase all MDA 60 feet, increase LP and LNAV visibility Cat C/D 1/4 mile.

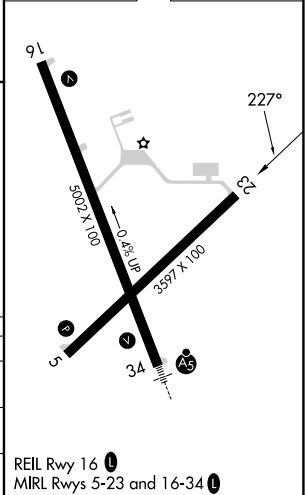
**⚠** MISSED APPROACH: Climb to 3000 direct YAJJU and hold.

ASOS <b>121.575</b>	MINNEAPOLIS CENTER <b>124.4 317.7</b>	UNICOM <b>123.0 (CTAF) 0</b>
------------------------	--	---------------------------------



CATEGORY	A	B	C	D
LP MDA	1640-1	382 (400-1)	1640-1 1/8	382 (400-1 1/8)
LNAV MDA	1660-1	402 (400-1)	1660-1 1/8	402 (400-1 1/8)
<b>C</b> CIRCLING	1760-1	482 (500-1)	2020-2 1/4 742 (800-2 1/4)	2020-2 1/2 742 (800-2 1/2)

ELEV 1278	TDZE 1258
-----------	-----------



EC-3, 05 SEP 2024 to 03 OCT 2024

EC-3, 05 SEP 2024 to 03 OCT 2024