

WAAS CH 56327 W27A	APP CRS 276°	Rwy Idg TDZE Apt Elev	6579 1328 1328
--	------------------------	-----------------------------	---

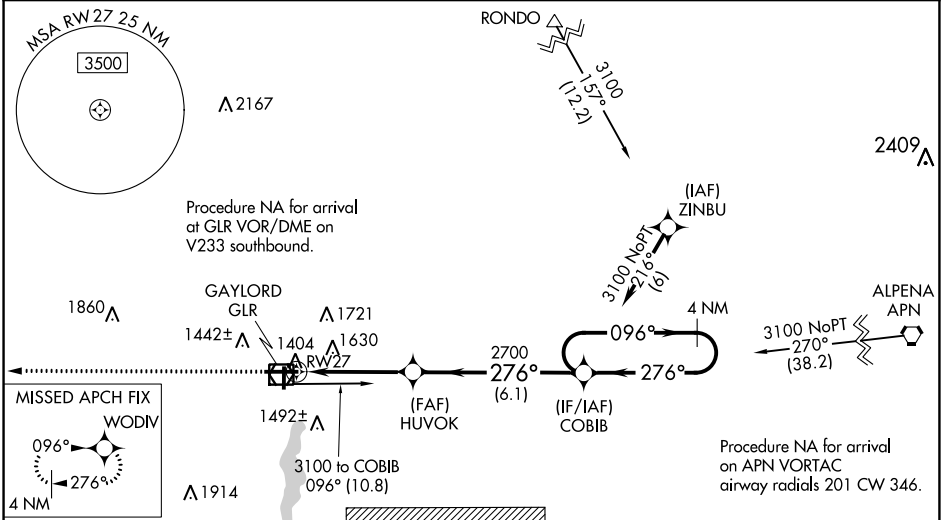
RNAV (GPS) RWY 27

GAYLORD RGNL (GLR)

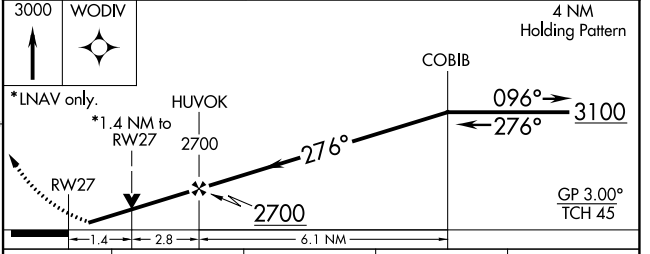
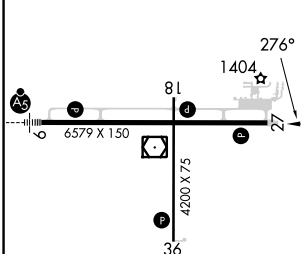
⚠ Circling to Rwy 18 and Rwy 36 NA at night. DME/DME RNP-0.3 NA. When local altimeter setting not received, use Grayling altimeter setting and increase all DA 71 feet and all MDA 80 feet. Increase LNAV and Circling Cats C and D visibility ¼ mile. Rwy 27 Helicopter visibility reduction below ¾ SM NA.

MISSED APPROACH: Climb to 3000 direct WODIV and hold.

ASOS 118.375	MINNEAPOLIS CENTER 134.6 354.05	UNICOM 122.8 (CTAF) 0
------------------------	---	---------------------------------



ELEV 1328	TDZE 1328
-----------	-----------



CATEGORY	A	B	C	D
LPV DA	1578-1		250 (300-1)	
LNAV MDA	1820-1	492 (500-1)	1820-1½	492 (500-1½)
CIRCLING	1840-1 512 (600-1)	1940-1 612 (700-1)	2040-2 712 (800-2)	2080-2½ 752 (800-2½)

REIL Rwy 18, 27 and 36 **0**
MIRL Rwy 18-36 **0**
HIRL Rwy 9-27 **0**

EC-1, 05 SEP 2024 to 03 OCT 2024

EC-1, 05 SEP 2024 to 03 OCT 2024