

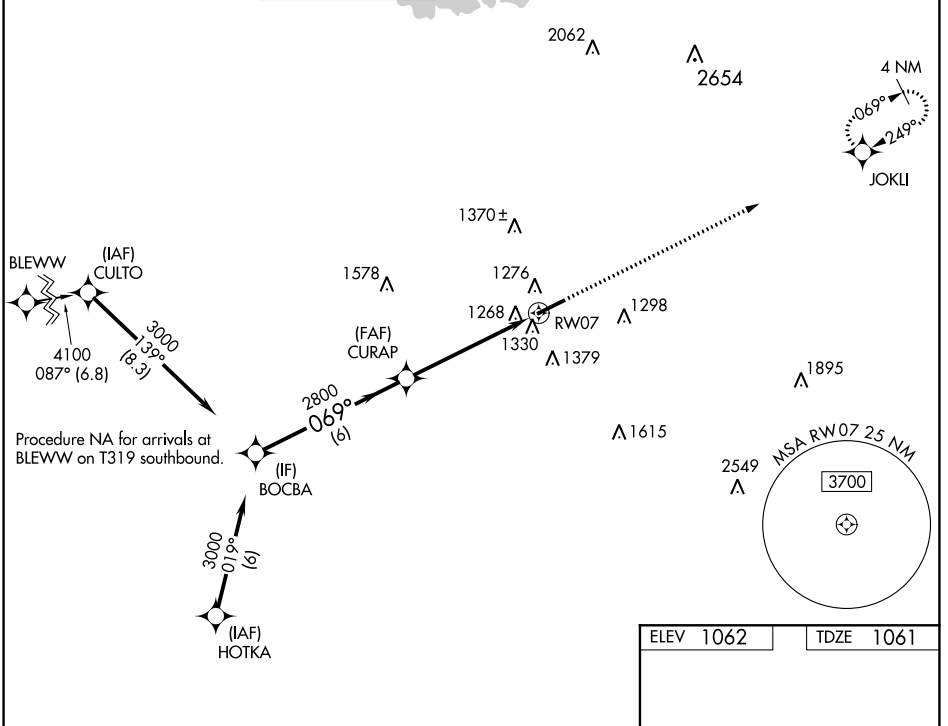
WAAS CH 97621 W07A	APP CRS 069°	Rwy Idg TDZE Apt Elev	6001 1061 1062
--	------------------------	-----------------------------	---

RNAV (GPS) RWY 7

GWINNETT COUNTY/BRISCOE FLD (LZU)

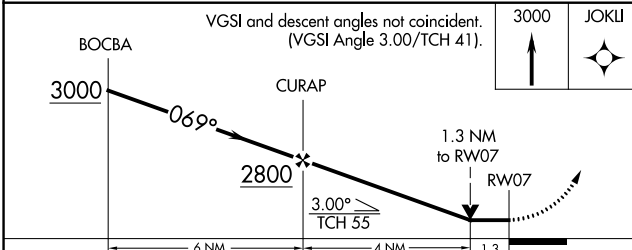
RNP APCH.		MISSED APPROACH: Climb to 3000 direct JOKLI and hold.	
Rwy 7 helicopter visibility reduction below 3/4 NA.			

ATIS 132.275	ATLANTA APP CON 126.975 239.275	GWINNETT TOWER * 124.1 (CTAF) 0	GND CON 121.8	CLNC DEL 121.8	CLNC DEL 134.0 (When twr closed)	UNICOM 123.05
------------------------	---	--	-------------------------	--------------------------	---	-------------------------



SE-4, 05 SEP 2024 to 03 OCT 2024

SE-4, 05 SEP 2024 to 03 OCT 2024



		6 NM		4 NM		1.3	
CATEGORY		A	B	C	D		
LP MDA		1520-1	459 (500-1)	1520-1 3/8	459 (500-1 1/8)		
LNVA MDA		1580-1	519 (600-1)	1580-1 3/8	519 (600-1 1/8)		
CIRCLING		1640-1	578 (600-1)	1680-1 3/4 618 (700-1 3/4)	1700-2 638 (700-2)		

