

APP CRS	Rwy Idg	<b>4488</b>
<b>335°</b>	TDZE	<b>70</b>
	Apt Elev	<b>70</b>

# RNAV (GPS) Y RWY 35

SUMMIT (EVY)

RNP APCH - GPS.

MISSED APPROACH: Climbing left turn to 2000 direct WENDS and hold.

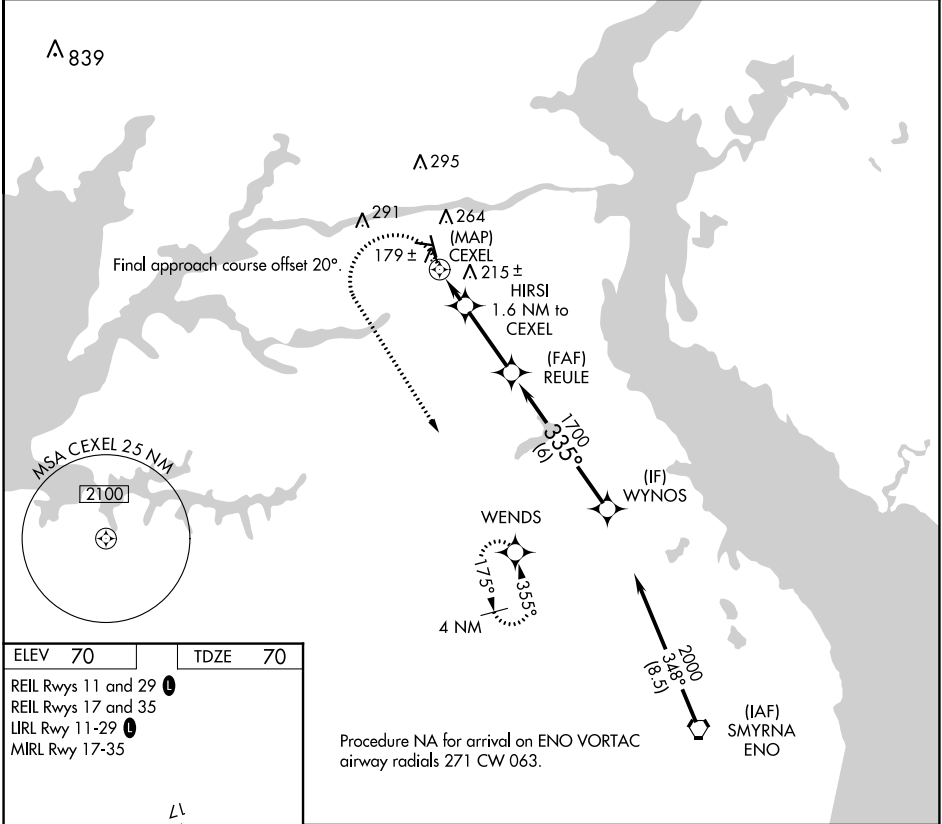
**⚠** Rwy 35 helicopter visibility reduction below 3/4 SM NA.

AWOS-3  
**132.325**

PHILADELPHIA APP CON  
**118.35 323.1**

UNICOM  
**122.725 (CTAF)**

**123.5 0**

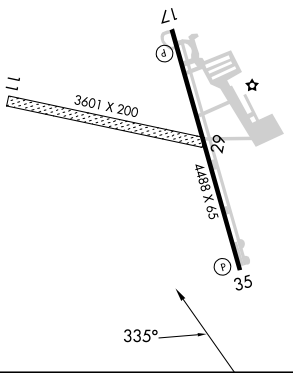


NE-3, 05 SEP 2024 to 03 OCT 2024

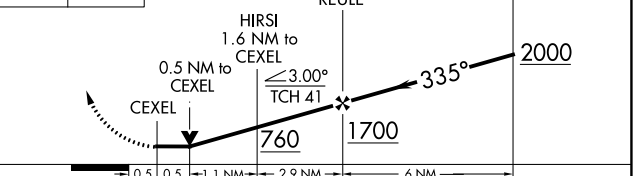
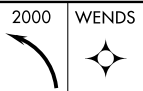
NE-3, 05 SEP 2024 to 03 OCT 2024

ELEV 70	TDZE 70
---------	---------

REIL Rwy 11 and 29 **0**  
 REIL Rwy 17 and 35  
 LIRL Rwy 11-29 **0**  
 MIRL Rwy 17-35



Procedure NA for arrival on ENO VORTAC airway radials 271 CW 063.



CATEGORY	A	B	C	D
LNAV MDA	440-1	370 (400-1)		