

(DIRT.DIRTT2) 17061

DIRTT TWO ARRIVAL (RNAV)

AL-5400 (FAA)

SPIRIT OF ST LOUIS (SUS)

ST. LOUIS, MISSOURI

DIRTT VERTICAL NAVIGATION PLANNING INFORMATION

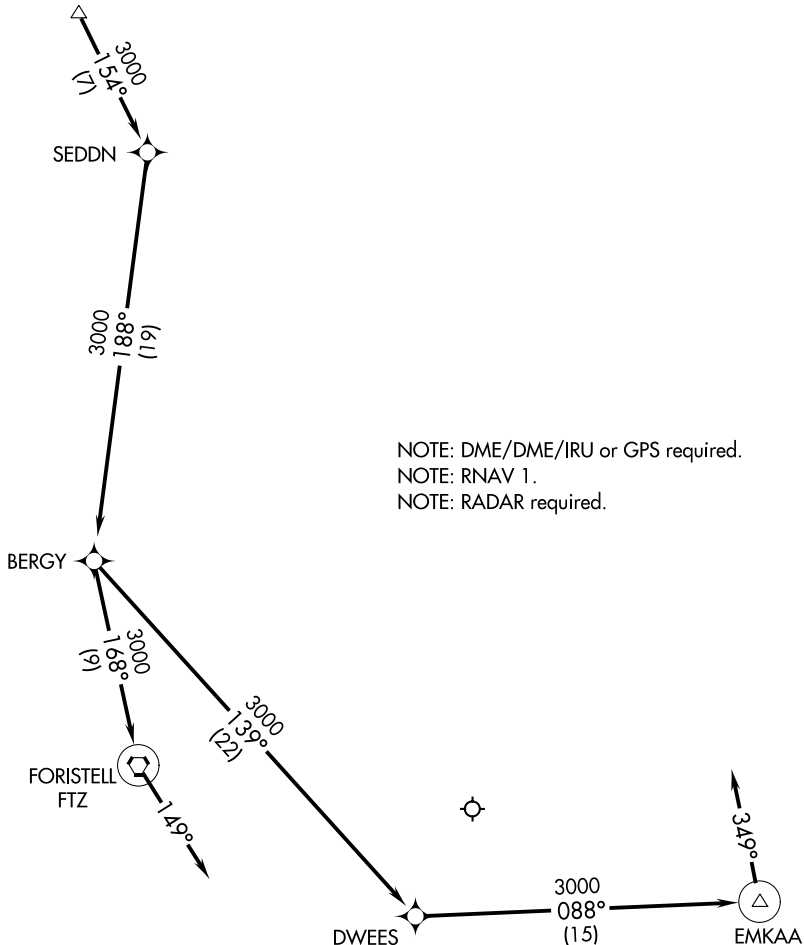
ST. LOUIS APP CON

119.15 335.5

ATIS

134.8

Expect 13000



NOTE: DME/DME/IRU or GPS required.

NOTE: RNAV 1.

NOTE: RADAR required.

NOTE: Chart not to scale.

ARRIVAL ROUTE DESCRIPTION

From DIRTT on track 154° to SEDDN, then on track 188° to BERGY.

LANDING RUNWAYS 8L/R: From BERGY on track 168° to FTZ VORTAC, then on track 149°. Expect RADAR vectors to final approach prior to FTZ VORTAC.

LANDING RUNWAYS 26L/R: From BERGY on track 139° to DWEES, then on track 088° to EMKAA, then on track 349°. Expect RADAR vectors to final approach prior to EMKAA.

DIRTT TWO ARRIVAL (RNAV)

(DIRT.DIRTT2) 02MAR17

ST. LOUIS, MISSOURI
SPIRIT OF ST LOUIS (SUS)

NC-3, 05 SEP 2024 to 03 OCT 2024

NC-3, 05 SEP 2024 to 03 OCT 2024