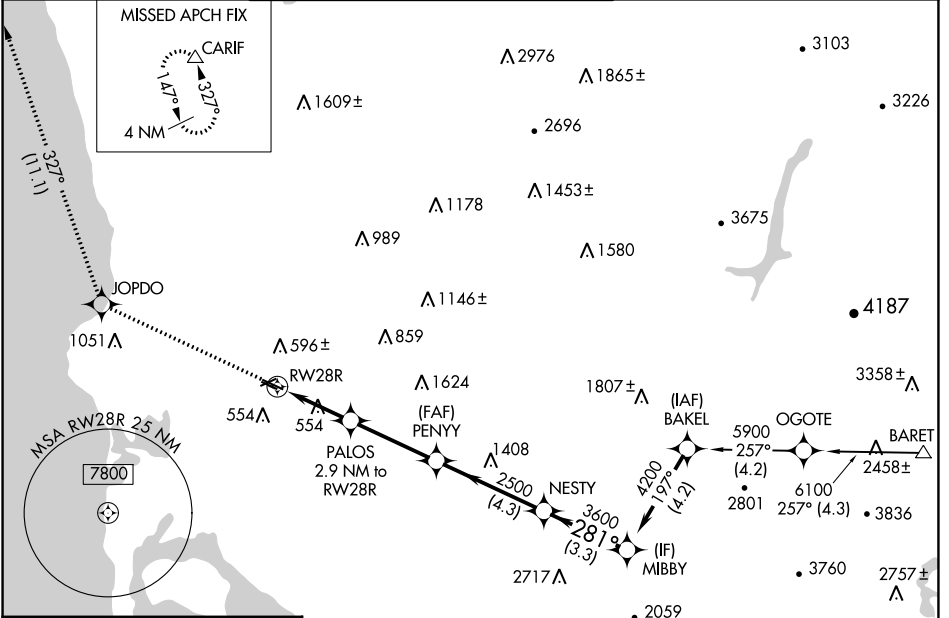


WAAS CH 45710 W28A	APP CRS 281°	Rwy Idg TDZE Apt Elev	3399 423 427
--	------------------------	-----------------------------	---

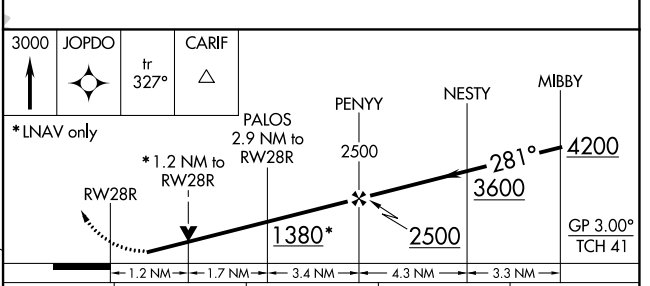
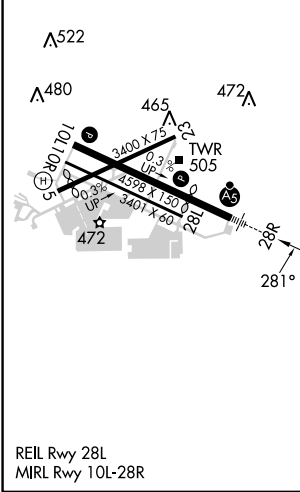
RNAV (GPS) RWY 28R

MONTGOMERY-GIBBS EXEC (M.Y.F.)

RNP APCH.		MALSR	MISSED APPROACH: Climb to 3000 direct JOPDO and on track 327° to CARIF and hold.		
<p>▼ Rwy 28R helicopter visibility reduction below $\frac{3}{4}$ SM NA. ▲ For uncompensated Baro-VNAV systems, LNAV/VNAV NA below -15°C or above 54°C.</p>					
ATIS 126.9	SOCAL APP CON 124.35 279.625	MONTGOMERY TOWER ★ 119.2 (CTAF) 0 269.4 (Rwys 5, 10L/R, 23, 28L) 125.7 269.4 (Rwy 28R)	GND CON 118.225	CLNC DEL 123.725	UNICOM 123.075



ELEV 427	TDZE 423
-----------------	-----------------



CATEGORY	A	B	C	D
LPV DA	673- $\frac{3}{4}$	250 (300- $\frac{3}{4}$)		NA
LNAV/VNAV DA	750- $\frac{3}{4}$	327 (400- $\frac{3}{4}$)		NA
LNAV MDA	840- $\frac{3}{4}$	417 (500- $\frac{3}{4}$)		NA
CIRCLING	920-1	493 (500-1)		NA