

RNAV (GPS)-A

MORRISVILLE-STOWE STATE (MVL)

APP CRS	Rwy Idg	N/A
051°	TDZE	N/A
	Apt Elev	733

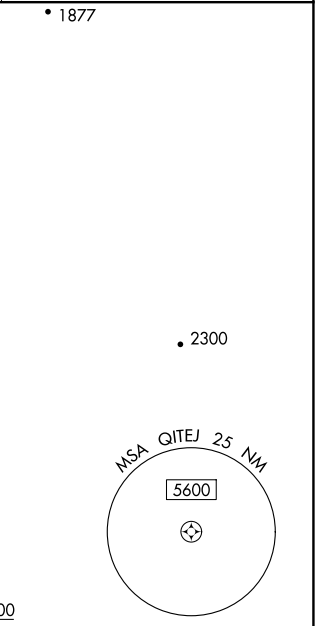
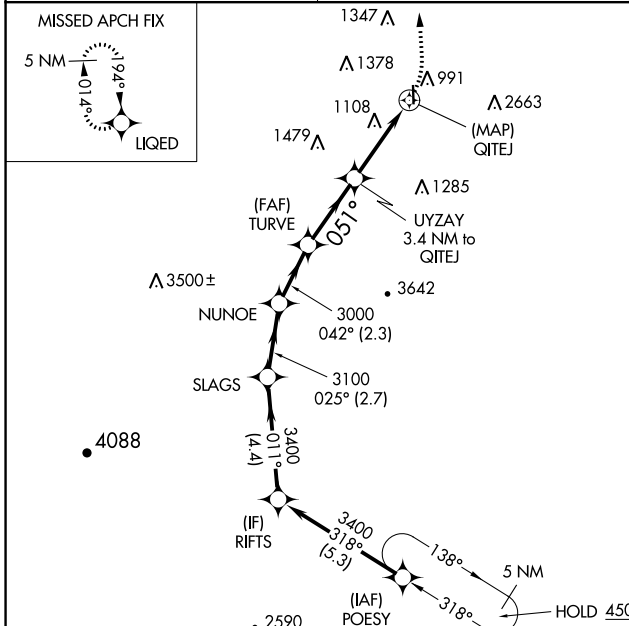
RNP APCH.

⚠ Circling NA for Cat C east of Rwy 1-19. When local altimeter setting not received, use Burlington altimeter setting and increase all MDAs 120 feet.

⚠ -19°C

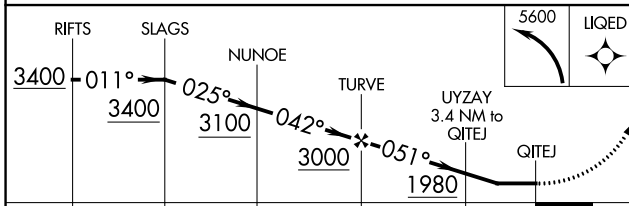
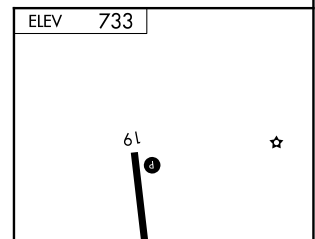
MISSED APPROACH: Climbing left turn to 5600 direct LIQED and hold, continue climb-in-hold to 5600.

ASOS 135.625	BOSTON CENTER 135.7 282.2	UNICOM 122.8 (CTAF) ①
------------------------	-------------------------------------	--

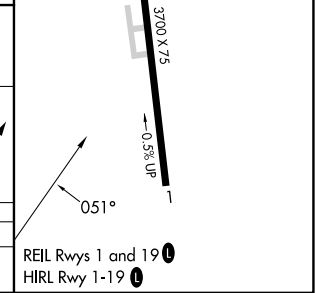


Procedure NA for arrival on MPV VOR/DME airway radials 317 CW 037.

MONTPELIER MPV



CATEGORY	A	B	C	D
C CIRCLING	1620-1¼ 887 (900-1¼)	1780-1½ 1047 (1100-1½)	1980-3 1247 (1300-3)	NA



NE-1, 05 SEP 2024 to 03 OCT 2024

NE-1, 05 SEP 2024 to 03 OCT 2024