

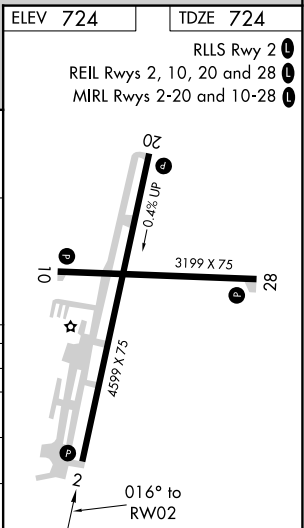
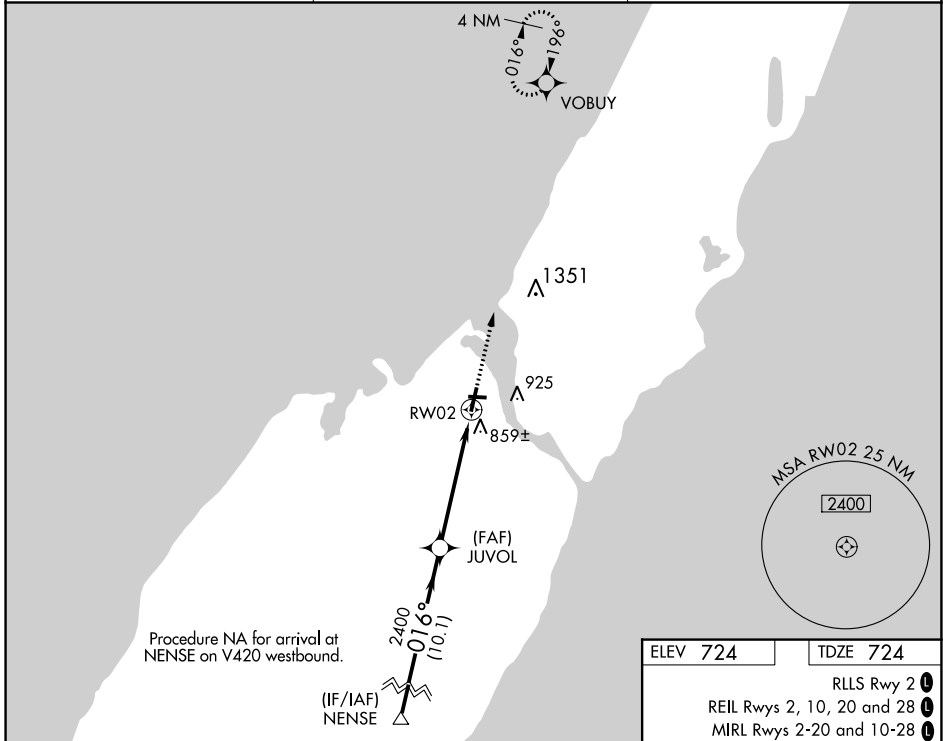
WAAS CH 81904 W02A	APP CRS 016°	Rwy Idg TDZE Apt Elev	4599 724 724
--	------------------------	-----------------------------	---

RNAV (GPS) RWY 2

DOOR COUNTY CHERRYLAND (SUE)

RNP APCH.	<p>▼ Rwy 2 helicopter visibility reduction below 3/4 SM NA. For uncompensated Baro-VNAV systems, LNAV/VNAV NA below -16°C or above 54°C.</p> <p>▲ MISSED APPROACH: Climb to 2600 direct VOBUY and hold.</p>
-----------	---

AWOS-3PT 128.325	GREEN BAY APP CON * 119.25 338.2	UNICOM 122.7(CTAF) 0
----------------------------	--	--------------------------------



CATEGORY	A		B		C		D	
	LPV	DA	1013-1	289 (300-1)	1164-1 1/2	440 (500-1 1/2)	1120-1 1/8	396 (400-1 1/8)
LNNAV/VNAV	DA	1164-1 1/2	440 (500-1 1/2)	1280-1 1/2	556 (600-1 1/2)	1340-2	616 (700-2)	
LNNAV	MDA	1120-1	396 (400-1)	1280-1 1/2	556 (600-1 1/2)	1340-2	616 (700-2)	
CIRCLING		1280-1	556 (600-1)	1280-1 1/2	556 (600-1 1/2)	1340-2	616 (700-2)	

EC-3, 05 SEP 2024 to 03 OCT 2024

EC-3, 05 SEP 2024 to 03 OCT 2024