

WAAS CH 49228 W05A	APP CRS 050°	Rwy Idg TDZE Apt Elev	3741 1041 1041
--	------------------------	-----------------------------	---

RNAV (GPS) RWY 5

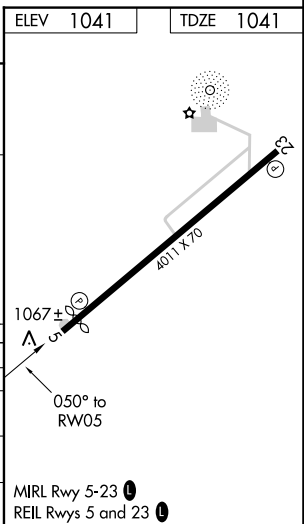
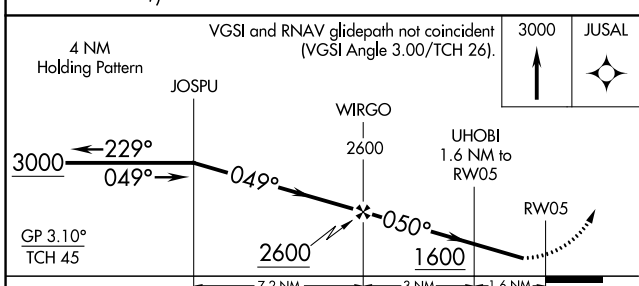
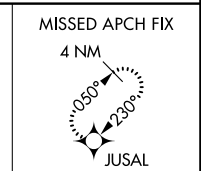
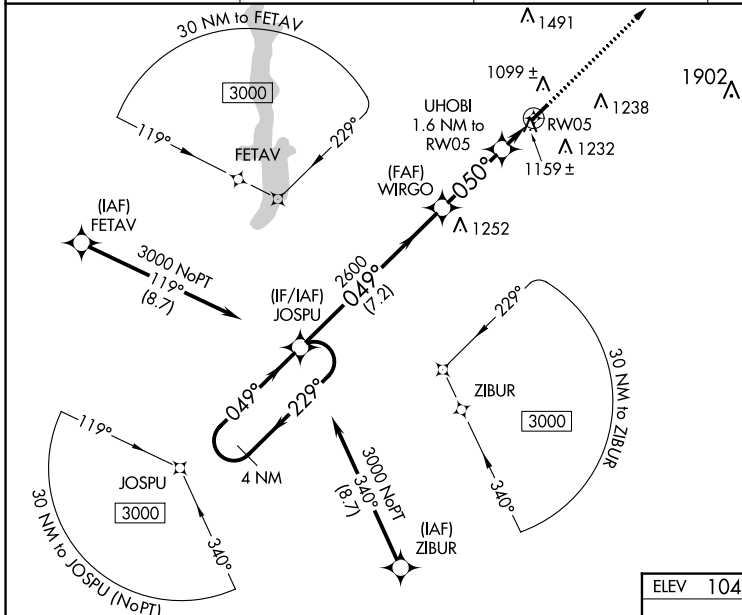
MIAMI UNIVERSITY (OXD)

RNP APCH - GPS.

⚠ NA Baro-VNAV NA when using Covington altimeter setting. Straight-in/Circling Rwy 5 at low, operational VGSI required, remain on or above VGSI glidepath until threshold. Rwy 5 helicopter visibility reduction below 1 SM NA. When local altimeter setting not received, use Covington altimeter setting: increase LPV DA to 1393 and all visibilities 1/8 SM; increase LNAV/VNAV DA to 1419 and all visibilities 1/4 SM; increase all MDA 100 feet and visibility LNAV Cat C 3/8 SM and Circling Cat C 1/2 SM.

MISSED APPROACH:
Climb to 3000 direct JUSAL and hold.

AWOS-3PT 118.625	CINCINNATI APP CON 121.0 254.25	UNICOM 122.8 (CTAF)	122.9 0
----------------------------	---	-------------------------------	-----------------------



CATEGORY	A	B	C	D
LPV DA	1304-1	263 (300-1)		NA
LNAV/VNAV DA	1330-1	289 (300-1)		NA
LNAV MDA	1420-1	379 (400-1)		NA
CIRCLING	1460-1 419 (500-1)	1600-1 559 (600-1)	1600-1½ 559 (600-1½)	NA

EC-2, 05 SEP 2024 to 03 OCT 2024

EC-2, 05 SEP 2024 to 03 OCT 2024