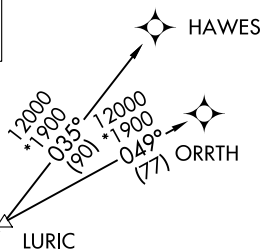
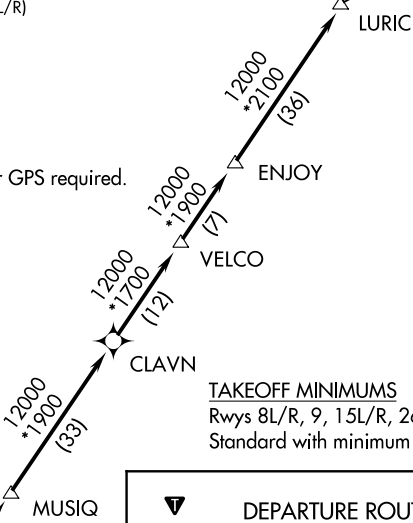


D-ATIS  
 124.05  
 CLNC DEL  
 128.1  
 CPDLC  
 GND CON  
 118.575 (Rwys 8L/R, 26L/R, 9/27)  
 121.7 (Rwys 15L/R, 33L/R)  
 HOUSTON TOWER  
 120.725 290.2 (Rwys 8L/26R)  
 125.35 290.2 (Rwys 8R/26L)  
 127.3 288.25 (Rwys 15L/R, 33L/R)  
 135.15 290.2 (Rwys 9/27)  
 HOUSTON DEP CON  
 132.25 285.425

**TOP ALTITUDE:  
 16000**



NOTE: RADAR required.  
 NOTE: DME/DME/IRU or GPS required.  
 NOTE: RNAV 1.



TAKEOFF MINIMUMS

Rwys 8L/R, 9, 15L/R, 26L/R, 27, 33L/R:  
 Standard with minimum climb of 500' per NM to 600.



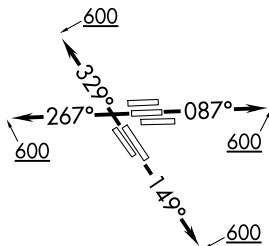
**DEPARTURE ROUTE DESCRIPTION**

TAKEOFF RUNWAYS 8L/R, 9: Climb on heading 087° to 600 for RADAR vectors to KNTKY, thence . . .  
TAKEOFF RUNWAYS 15L/R: Climb on heading 149° to 600 for RADAR vectors to KNTKY, thence . . .  
TAKEOFF RUNWAYS 26L/R, 27: Climb on heading 267° to 600 for RADAR vectors to KNTKY, thence . . .  
TAKEOFF RUNWAYS 33L/R: Climb on heading 329° to 600 for RADAR vectors to KNTKY, thence . . .

. . . on track 032° to PEETY, then on track 032° to DARTR, then on track 031° to MUSIQ, then on track 031° to CLAVN, then on track 031° to VELCO, then on track 031° to ENJOY, then on track 031° to LURIC, then on (transition). Maintain 16000 or as assigned by ATC. Expect filed altitude 10 minutes after departure.

HAWES TRANSITION (LURIC8.HAWES)

ORRTH TRANSITION (LURIC8.ORRTH)



NOTE: Chart not to scale.

SC-5, 05 SEP 2024 to 03 OCT 2024

SC-5, 05 SEP 2024 to 03 OCT 2024