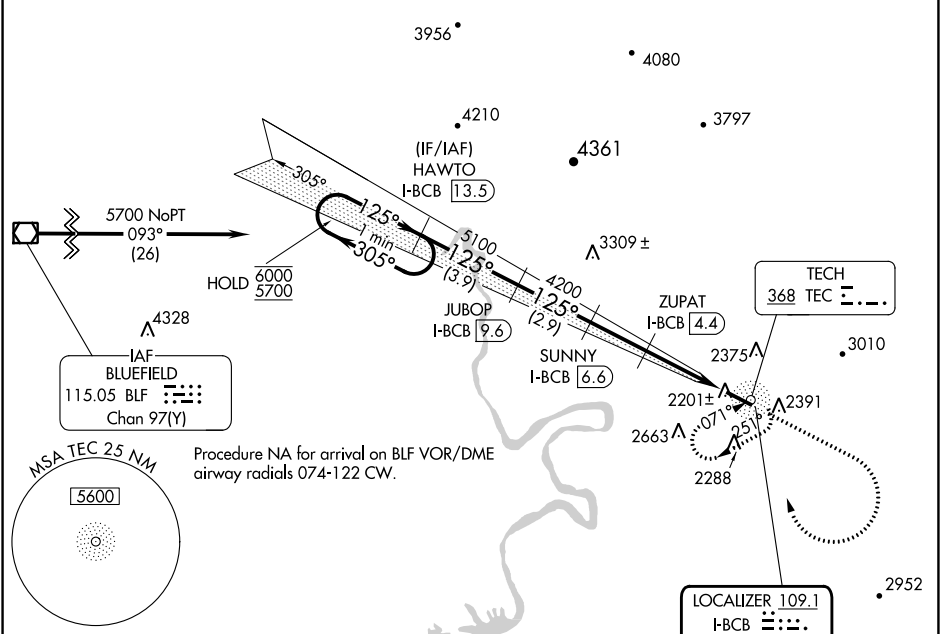


LOC/DME I-BCB <b>109.1</b> Chan <b>28</b>	APP CRS <b>125°</b>	Rwy Idg TDZE <b>5501</b> <b>2119</b>	Apt Elev <b>2120</b>
-------------------------------------------------	------------------------	--------------------------------------------	-------------------------

# LOC RWY 13

VIRGINIA TECH/MONTGOMERY EXEC (C/B)

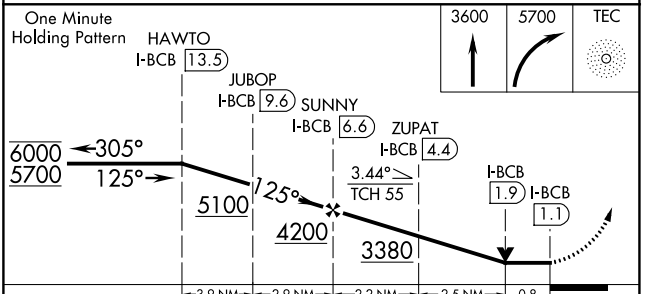
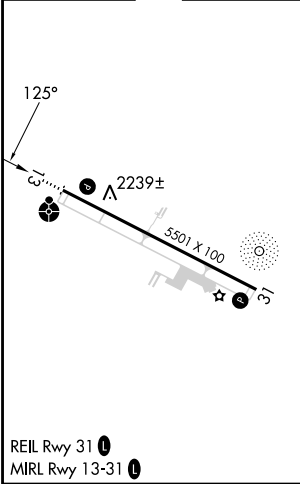
ADF and DME required.		ODALS	MISSED APPROACH: Climb to 3600 then climbing right turn to 5700 direct TEC NDB and hold, continue climb-in-hold to 5700.
Rwy 13 helicopter visibility reduction below 1 SM NA. Inop table does not apply.			
AWOS-3 <b>133.325</b>	ROANOKE APP CON <b>126.9 339.8</b>	CLNC DEL <b>124.85</b>	UNICOM <b>123.05 (CTAF)</b>



NE-3, 05 SEP 2024 to 03 OCT 2024

NE-3, 05 SEP 2024 to 03 OCT 2024

ELEV 2120	TDZE 2119
-----------	-----------



CATEGORY	A	B	C	D
S-13	2480-1 361 (400-1)			NA
CIRCLING	2760-1 640 (700-1)	2820-1 700 (700-1)	2980-2½ 860 (900-2½)	NA