

APP CRS
149°
 Rwy Idg **5700**
 TDZE **831**
 Apt Elev **833**

RNAV (GPS) RWY 15

LAWRENCE RGNL (LWC)

RNP APCH.

MISSED APPROACH: Climb to 3100 direct GOLEY and hold.

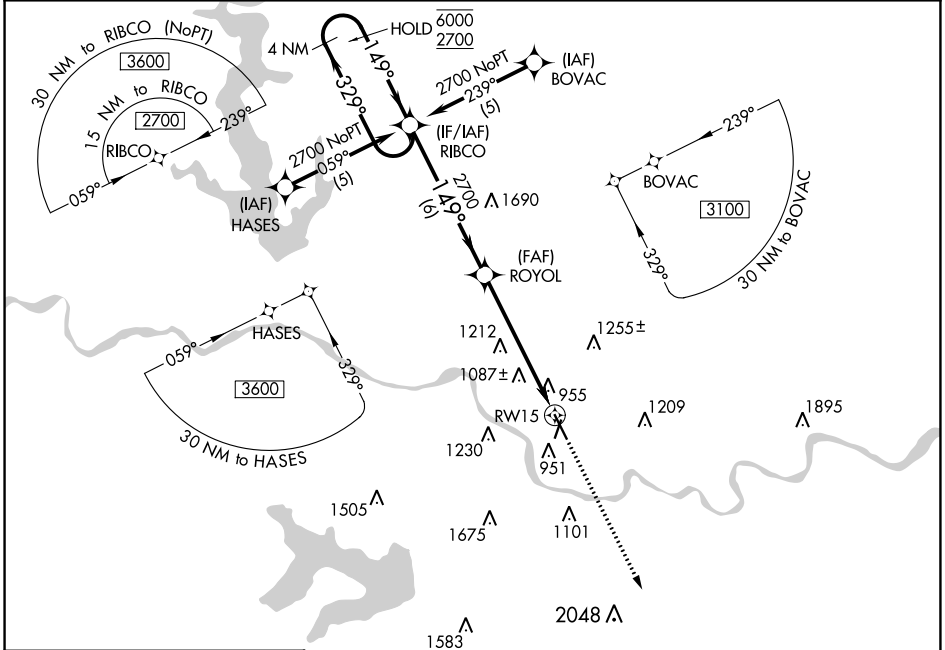
⚠ Rwy 15 Helicopter visibility reduction below 3/4 SM NA.

ASOS
121.225

KANSAS CITY CENTER
123.8 343.7

CLNC DEL
121.825

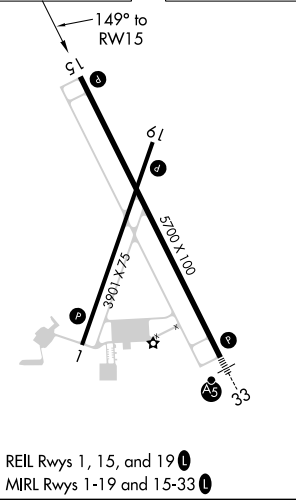
UNICOM
123.0 (CTAF) 0



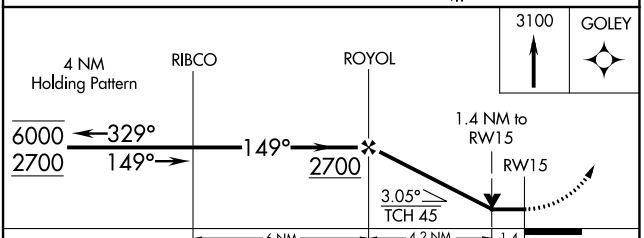
NC-2, 05 SEP 2024 to 03 OCT 2024

NC-2, 05 SEP 2024 to 03 OCT 2024

ELEV **833** TDZE **831**



REIL Rws 1, 15, and 19 **0**
 MIRL Rws 1-19 and 15-33 **0**



CATEGORY	A	B	C	D
LNAV MDA	1340-1	509 (600-1)	1340-1½ 509 (600-1½)	NA
CIRCLING	1420-1 587 (600-1)	1480-1 647 (700-1)	1620-2¼ 787 (800-2¼)	NA