

LOC/DME I-SMF 111.1 Chan 48	APP CRS 168°	Rwy ldg 8598 TDZE 25 Apt Elev 27
--	------------------------	---

ILS RWY 17R (CAT II & III)

SACRAMENTO INTL (SMF)

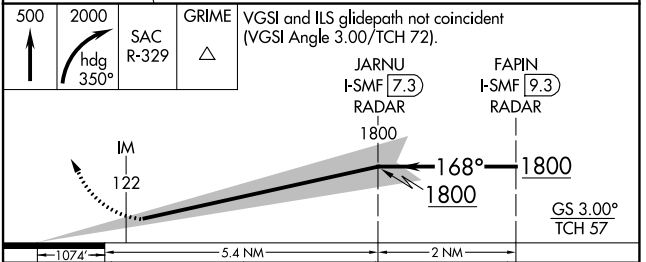
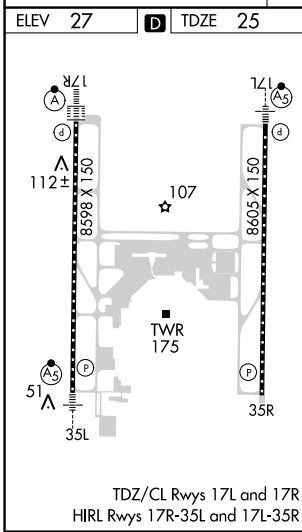
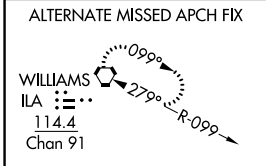
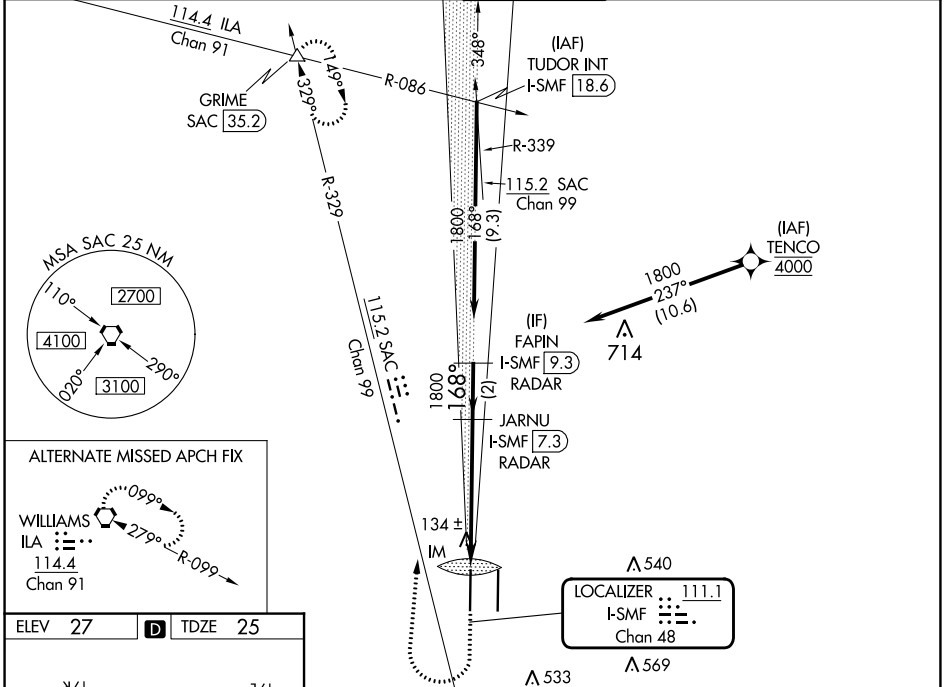
Aircraft not GPS equipped - RADAR required for procedure entry. DME or RADAR required. RNP APCH-GPS. From TENCO.

ALSF-2

Simultaneous approach authorized.

MISSED APPROACH: Climb to 500 then climbing right turn to 2000 on heading 350° and SAC VORTAC R-329 to GRIME INT/SAC 35.2 DME and hold.

D-ATIS 126.75	NORCAL APP CON 125.4 259.1 (W-NE) 125.25 257.9 (SW) 127.4 317.5 (E-SE)	CAPTOL TOWER 125.7 256.7	GND CON 121.7 256.7	CLNC DEL 121.1 256.7	CPDLC
-------------------------	--	------------------------------------	-------------------------------	--------------------------------	-------



500	2000	SAC R-329	GRIME	VGSI and ILS glidepath not coincident (VGSI Angle 3.00/TCH 72).			
		hdg 350°		JARNU I-SMF (7.3) RADAR	FAPIN I-SMF (9.3) RADAR		
		IM 122		1800		1800	
		1074'		5.4 NM		2 NM	
CATEGORY	A	B	C	D			
S-ILS 17R	CAT II RA 103/12 100 DA 125						
S-ILS 17R	CAT III RVR 06						

CATEGORY II & III ILS - SPECIAL AIRCREW & AIRCRAFT CERTIFICATION REQUIRED

SW-2, 05 SEP 2024 to 03 OCT 2024

SW-2, 05 SEP 2024 to 03 OCT 2024