

SW-2, 05 SEP 2024 to 03 OCT 2024

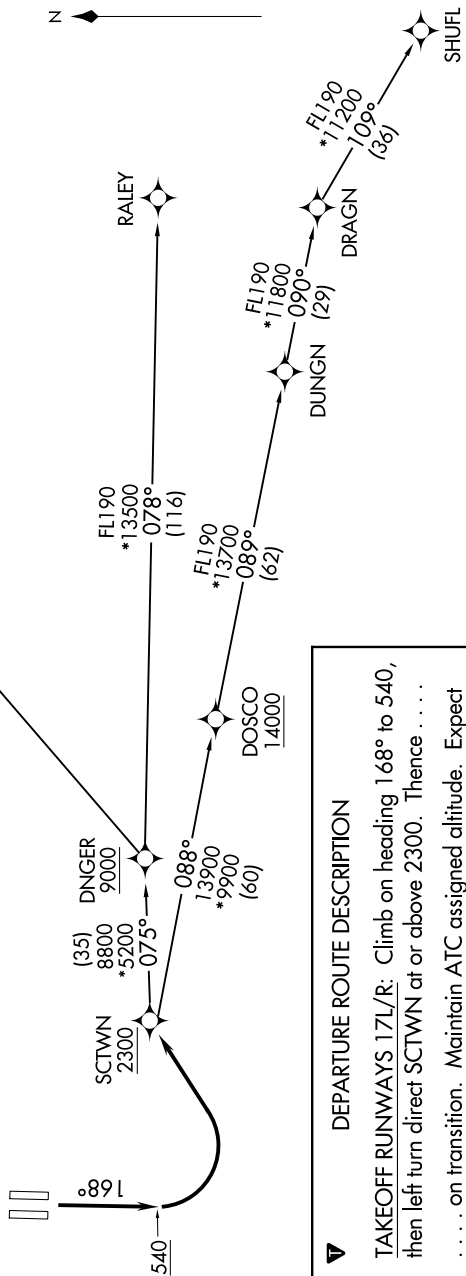
**TOP ALTITUDE:  
ASSIGNED BY ATC**

RNAV - DME/DME/IRU or GPS  
RADAR required for non-GPS equipped aircraft.

NORCAL DEP CON  
127.4 317.5

**TAKEOFF MINIMUMS**

Rwys 17L/R: Standard with minimum climb of 500' per NM to 540.



**DEPARTURE ROUTE DESCRIPTION**

**TAKEOFF RUNWAYS 17L/R:** Climb on heading 168° to 540, then left turn direct SCTWN at or above 2300. Thence . . . . .  
. . . . . on transition. Maintain ATC assigned altitude. Expect filed altitude 5 minutes after departure.

- MACUS TRANSITION (SCTWN4.MACUS)
- RALEY TRANSITION (SCTWN4.RALEY)
- SHUFL TRANSITION (SCTWN4.SHUFL)

NOTE: Chart not to scale.

SW-2, 05 SEP 2024 to 03 OCT 2024