

LOC/DME I-OYM 108.9 Chan 26	APP CRS 281°	Rwy Idg TDZE Apt Elev 4300 1934 1934
--	------------------------	--

LOC RWY 28
ST MARYS MUNI (OYM)

DME required.

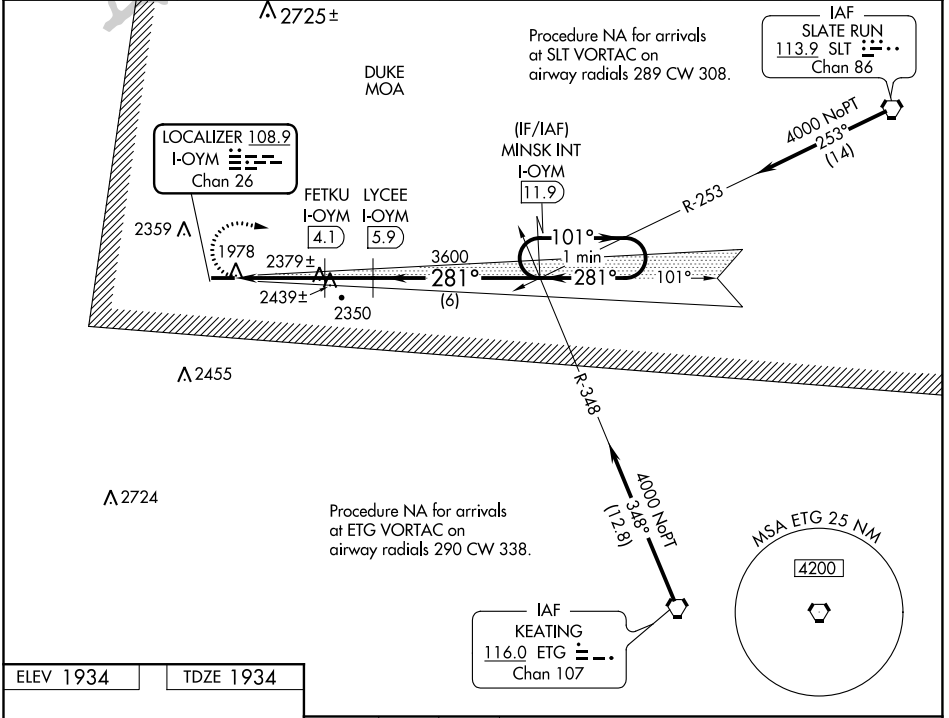
▼ Inop table does not apply to Cat A. Rwy 28 helicopter visibility reduction below 3/4 SM
 ▲ NA VDP NA when using Bradford altimeter setting. When local altimeter setting not received, use Bradford altimeter setting and increase all MDA 240 feet and S-28 Cat B visibility 1/4 SM, Cat C/D 1/2 SM and Circling Cat A 1/4 SM, Cat B 1/2 SM, Cat C 3/4 SM.
 ☳ -36°C For inop ALS, increase S-28 Cat C/D visibility to 2 1/2 SM. For inop ALS when using Bradford altimeter setting, increase S-28 Cat C/D visibility to 3 SM.

MALS



MISSED APPROACH:
Climbing right turn to 4000 on I-OYM east course to MINSK INT/ 11.9 DME and hold.

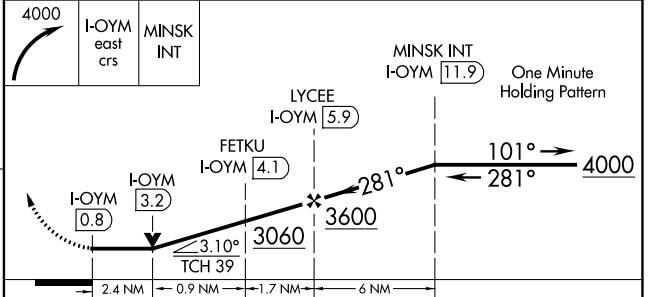
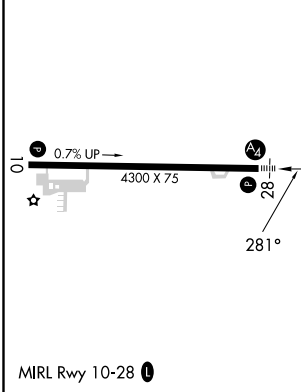
AWOS-3P 118.05	CLEVELAND CENTER 126.725 291.65	ALTOONA CLNC DEL 122.4	UNICOM 122.7 (CTAF)
--------------------------	---	----------------------------------	-------------------------------



NE-4, 05 SEP 2024 to 03 OCT 2024

NE-4, 05 SEP 2024 to 03 OCT 2024

ELEV 1934	TDZE 1934
-----------	-----------



CATEGORY	A	B	C	D
S-28	2740-1	806 (900-1)	2740-2	806 (900-2)
CIRCLING	2740-1 806 (900-1)	2740-1 1/4 806 (900-1 1/4)	2740-2 1/2 806 (900-2 1/2)	2840-2 3/4 906 (1000-2 3/4)