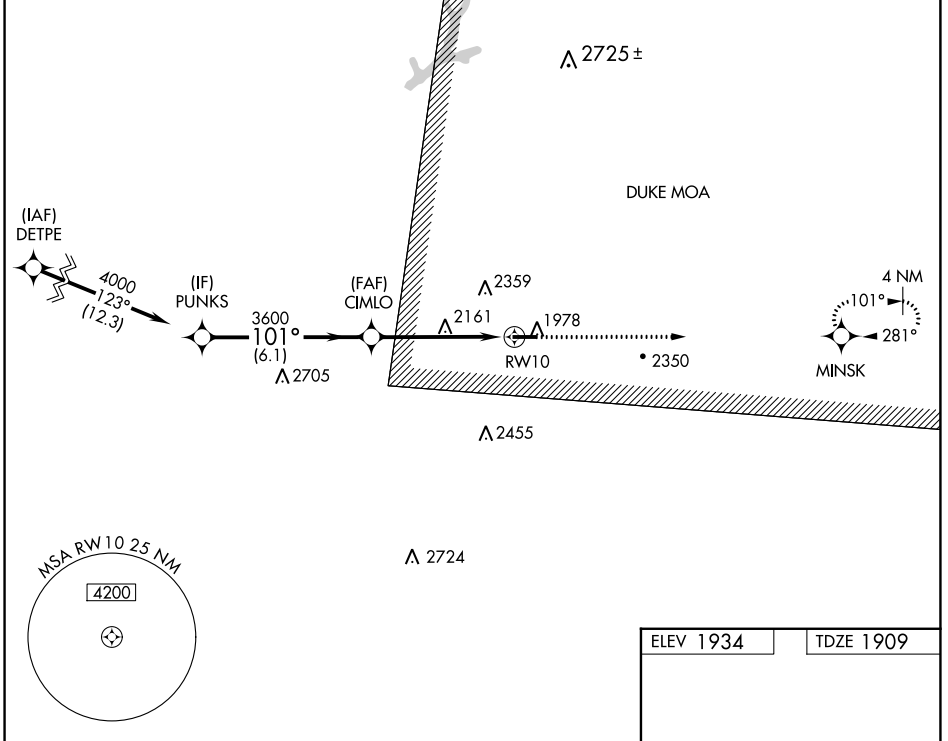


| | | |
|-------------|----------|-------------|
| APP CRS | Rwy Idg | 4300 |
| 101° | TDZE | 1909 |
| | Apt Elev | 1934 |

RNAV (GPS) RWY 10

ST MARYS MUNI (OYM)

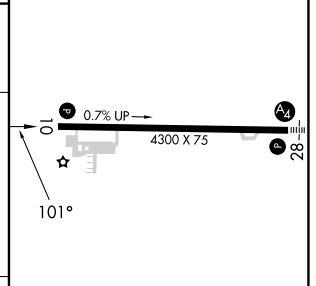
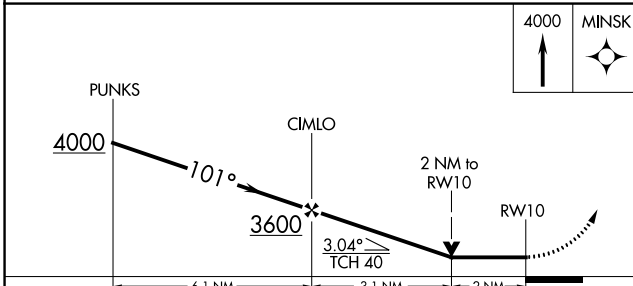
| | | | |
|--|-----------------------|---|-----------------------|
| RNP APCH - GPS. | | MISSED APPROACH: Climb to 4000 direct MINSK and hold. | |
| Rwy 10 helicopter visibility reduction below 3/4 SM NA. VDP NA when using Bradford altimeter setting. When local altimeter setting not received, use Bradford altimeter setting and increase all MDA 240 feet, and LNAV visibility Cat A/B 1/4 SM, visibility Cat C/D 5/8 SM, and Circling visibility Cat A/B 1/2 SM, visibility Cat C 3/4 SM. | | | |
| AWOS-3P | CLEVELAND CENTER | ALTOONA CLNC DEL | UNICOM |
| 118.05 | 126.725 291.65 | 122.4 | 122.7 (CTAF) 0 |



NE-4, 05 SEP 2024 to 03 OCT 2024

NE-4, 05 SEP 2024 to 03 OCT 2024

| | |
|-----------|-----------|
| ELEV 1934 | TDZE 1909 |
|-----------|-----------|



| CATEGORY | A | B | C | D |
|----------|-----------------------|-----------------------|-------------------------------|------------------------|
| LNAV MDA | 2580-1 | 671 (700-1) | 2580-1 7/8 | 671 (700-1 7/8) |
| CIRCLING | 2620-1 686 (700-1) | 2660-1 726 (800-1) | 2700-2 1/4 766 (800-2 1/4) | 2840-3 906 (1000-3) |

MIRL Rwy 10-28 0