

LOC/DME I-GVL <b>110.55</b> Chan <b>42</b> (Y)	APP CRS <b>044°</b>	Rwy Idg <b>5370</b> TDZE <b>1275</b> Apt Elev <b>1277</b>
--	------------------------	---

# ILS or LOC RWY 5

LEE GILMER MEML (GVL)

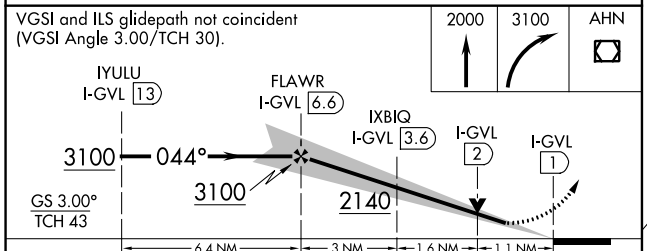
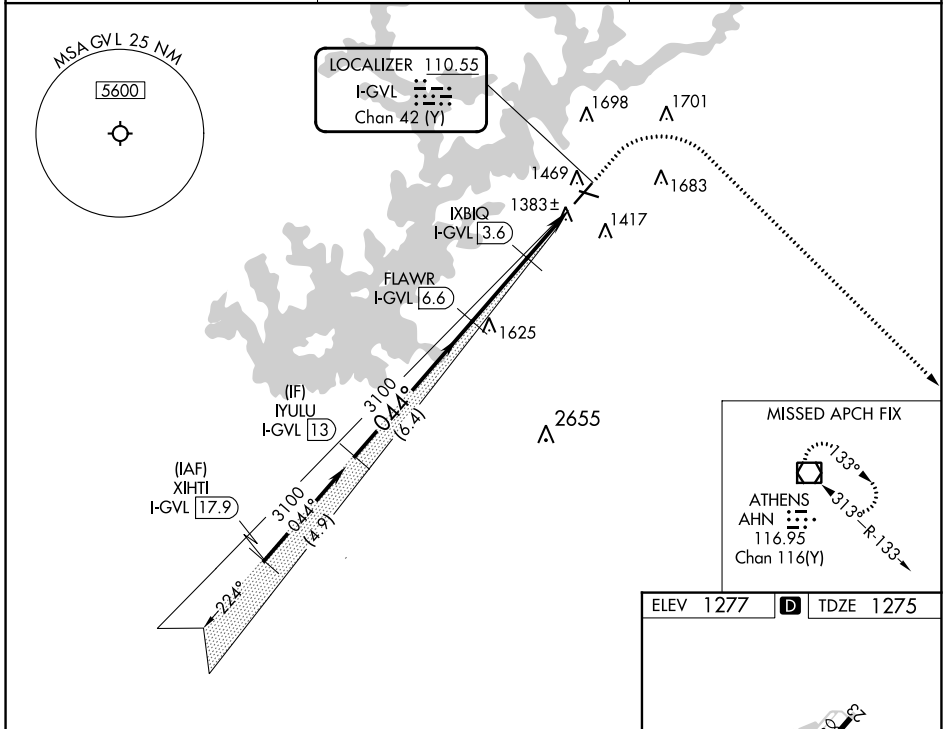
DME required.  
RADAR required for procedure entry.

⚠ Circling Rwy 11, 29 NA at night.  
For inop ALS increase S-LOC 5 Cats C and D visibility to 1 SM.

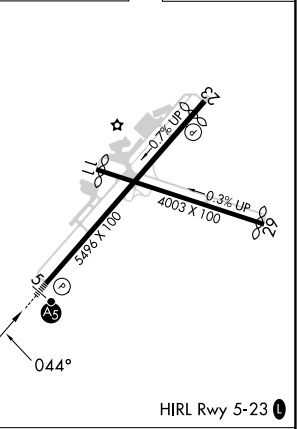
MALSR

MISSED APPROACH: Climb to 2000 then climbing right turn to 3100 direct AHN VOR/DME and hold.

ASOS <b>126.475</b>	ATLANTA APP CON* <b>132.475 291.1</b>	UNICOM <b>123.075</b> (CTAF) <b>0</b>
------------------------	--	--



ELEV 1277	D	TDZE 1275
-----------	---	-----------



CATEGORY	A	B	C	D
S-ILS 5	1475-½ 200 (200-½)			
S-LOC 5	1640-½	365 (400-½)	1640-⅝	365 (400-⅝)
CIRCLING	1780-1 503 (600-1)	2000-1 723 (800-1)	2000-2 723 (800-2)	2020-2½ 743 (800-2½)

FAF to MAP 5.6 NM					
Knots	60	90	120	150	180
Min:Sec	5:36	3:44	2:48	2:14	1:52

SE-4, 05 SEP 2024 to 03 OCT 2024

SE-4, 05 SEP 2024 to 03 OCT 2024