

# KARR SEVEN DEPARTURE (RNAV)

**TOP ALTITUDE:  
ASSIGNED BY ATC**

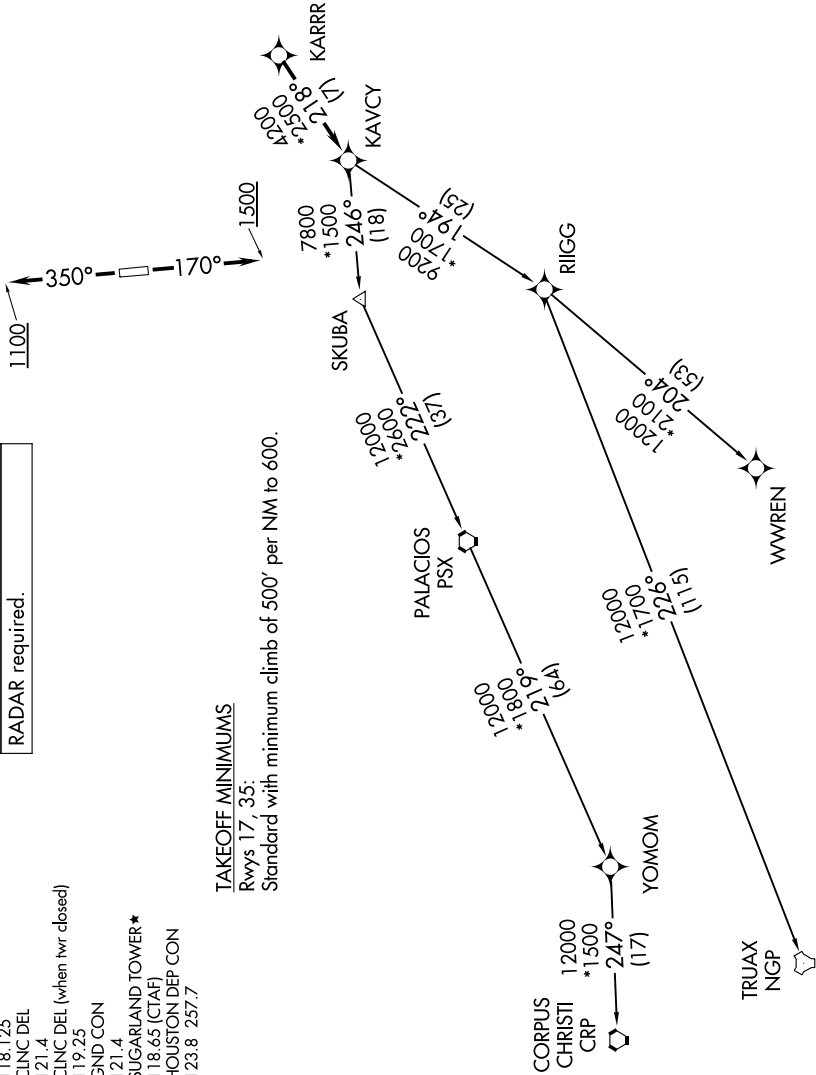
SC-5, 05 SEP 2024 to 03 OCT 2024

RNAV-1 DME/DME/IRU or GPS.  
RADAR required.

ATIS \*  
118.125  
CINC DEL  
121.4  
CINC DEL (when hwr closed)  
119.25  
GND CON  
121.4  
SUGARLAND TOWER \*  
118.65 (CTAF)  
HOUSTON DEP CON  
123.8 257.7

**TAKEOFF MINIMUMS**

Rwys 17, 35:  
Standard with minimum climb of 500' per NM to 600.



(NARRATIVE ON FOLLOWING PAGE)

NOTE: Chart not to scale.

SC-5, 05 SEP 2024 to 03 OCT 2024