

WAAS CH 45841 W14A	APP CRS 136°	Rwy Idg TDZE Apt Elev	3650 1245 1245
--	------------------------	-----------------------------	---

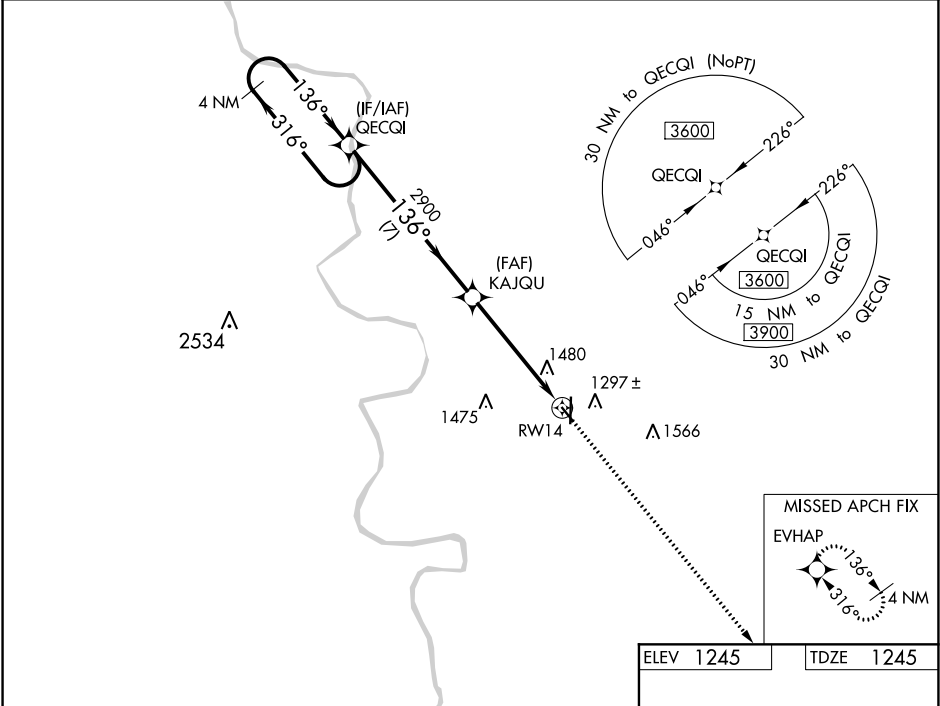
RNAV (GPS) RWY 14

COUNCIL BLUFFS MUNI (CBF)

For uncompensated Baro-VNAV systems, LNAV/VNAV NA below -18°C (0°F) or above 54°C (130°F). Rwy 14 helicopter visibility reduction below 3/4 SM NA. DME/DME RNP-0.3 NA.

MISSED APPROACH: Climb to 3900 direct EVHAP and hold.

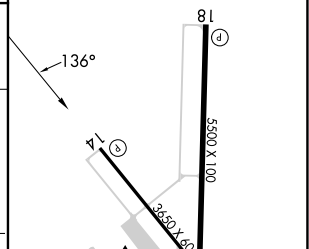
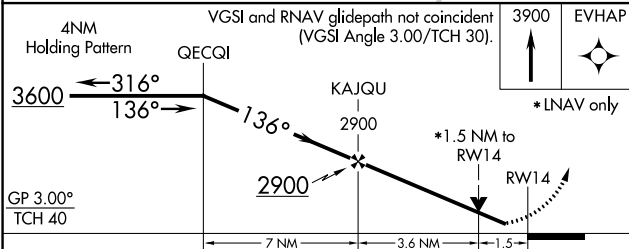
AWOS-3 126.575	OMAHA APP CON 124.5 263.0	CLNC DEL 127.675	UNICOM 122.725 (CTAF) 0
--------------------------	-------------------------------------	----------------------------	--



NC-3, 05 SEP 2024 to 03 OCT 2024

NC-3, 05 SEP 2024 to 03 OCT 2024

ELEV 1245	TDZE 1245
-----------	-----------



CATEGORY	A	B	C	D
LPV DA	1495-3/4		250 (300-3/4)	
LNAV/VNAV DA	1816-1 1/8		571 (600-1 1/8)	
LNAV MDA	1740-1 495 (500-1)		1740-1 3/8 495 (500-1 3/8)	
CIRCLING	1780-1 535 (600-1)		1780-1 1/2 1880-2 635 (700-2)	

MIRL Rwy 14-32 **0**
 HIRL Rwy 18-36 **0**
 REL Rws 14, 32, 18, and 36 **0**