

WAAS CH 90441 W32A	APP CRS 316°	Rwy Idg TDZE Apt Elev	3650 1245 1245
--	------------------------	-----------------------------	---

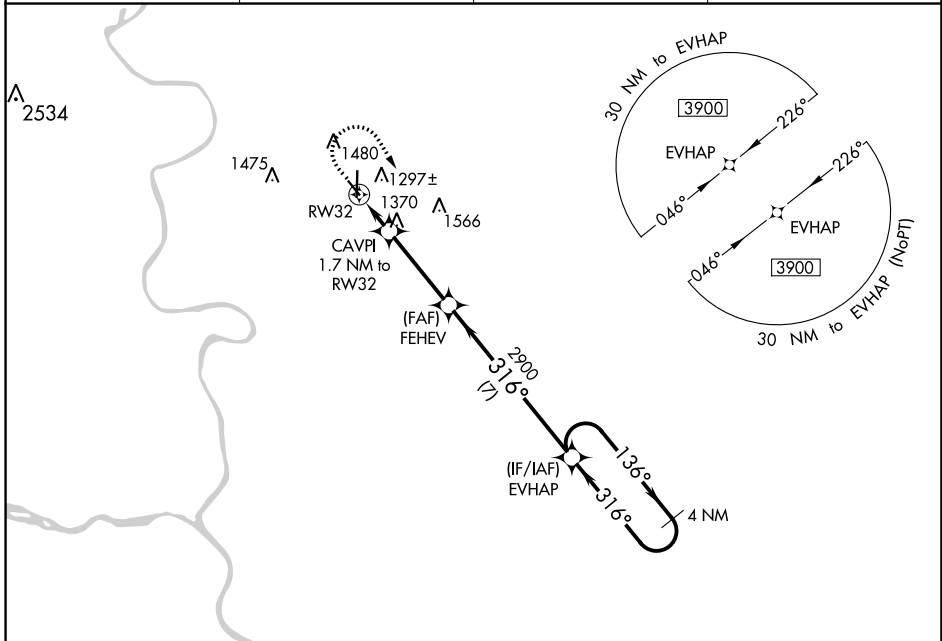
RNAV (GPS) RWY 32

COUNCIL BLUFFS MUNI (CBF)

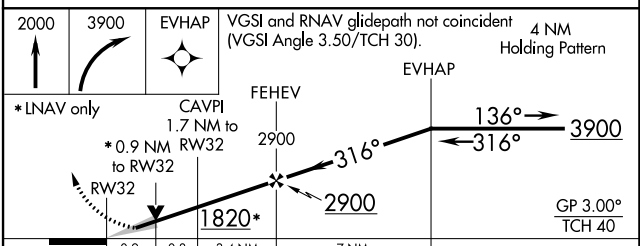
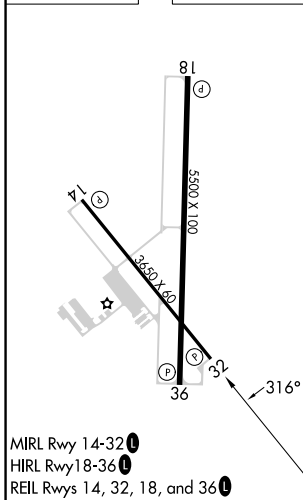
For uncompensated Baro-VNAV systems, LNAV/VNAV NA below -18°C (0°F) or above 54°C (130°F).
DME/DME RNP- 0.3 NA.

MISSED APPROACH: Climb to 2000 then climbing right turn to 3900 direct EVHAP and hold.

AWOS-3 126.575	OMAHA APP CON 124.5 263.0	CLNC DEL 127.675	UNICOM 122.725 (CTAF) U
--------------------------	-------------------------------------	----------------------------	--



ELEV 1245	TDZE 1245
-----------	-----------



CATEGORY	A	B	C	D
LPV DA		1445- ³ / ₄	200 (200- ³ / ₄)	
LNAV/VNAV DA		1495- ³ / ₄	250 (300- ³ / ₄)	
LNAV MDA		1620-1	375 (400-1)	
<input checked="" type="checkbox"/> CIRCLING	1780-1	535 (600-1)	1780-1½ 535 (600-1½)	1880-2 635 (700-2)

NC-3, 05 SEP 2024 to 03 OCT 2024

NC-3, 05 SEP 2024 to 03 OCT 2024