

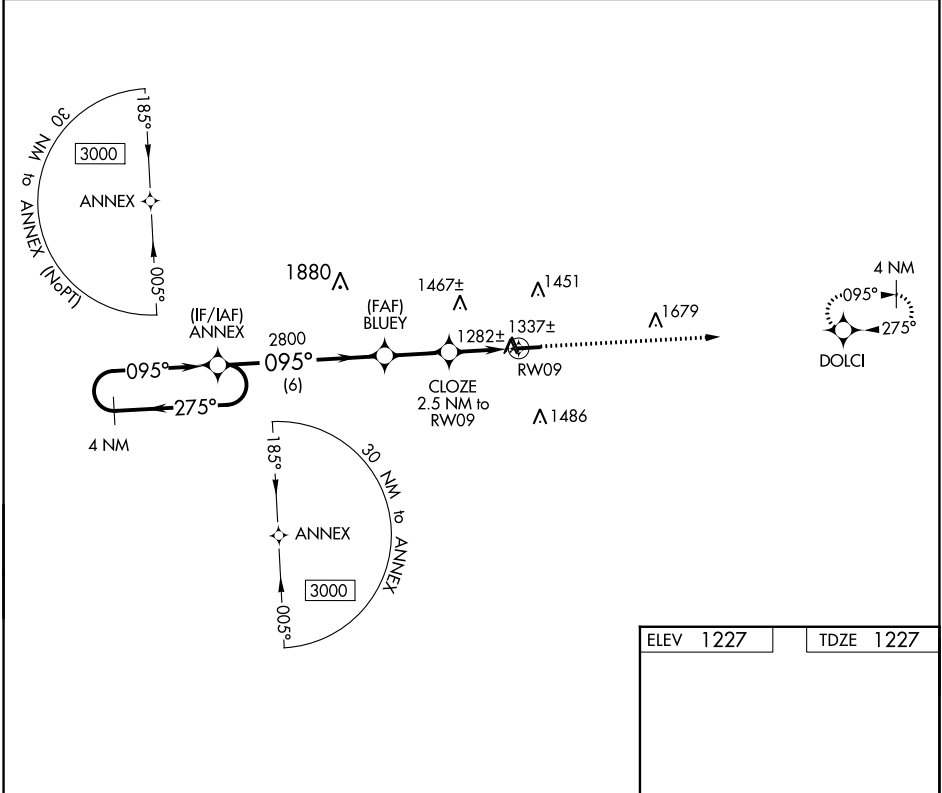
APP CRS	Rwy Idg	4400
095°	TDZE	1227
	Apt Elev	1227

RNAV (GPS) RWY 9

HOLMES COUNTY (10G)

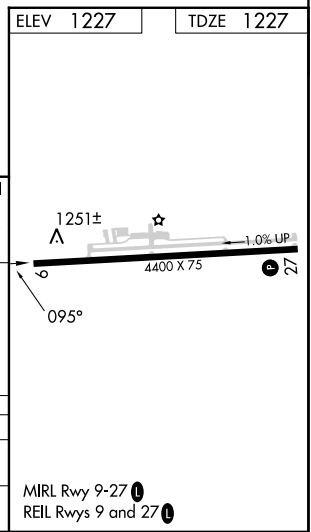
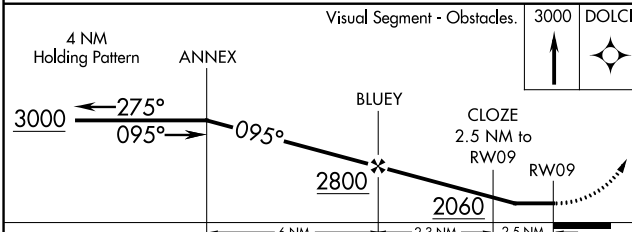
RNP APCH - GPS.	MISSED APPROACH: Climb to 3000 direct DOLCI and hold.
Rwy 9 helicopter visibility reduction below ¾ SM NA. When local altimeter setting not received, use Wayne County altimeter setting: increase all MDA 60 feet and visibility LNAV and Circling Cats C and D ¼ SM.	

AWOS-3 128.325	INDIANAPOLIS CENTER 124.45 323.275	UNICOM 123.0 (CTAF)	123.4 0
--------------------------	--	-------------------------------	----------------



EC-2, 05 SEP 2024 to 03 OCT 2024

EC-2, 05 SEP 2024 to 03 OCT 2024



CATEGORY	A	B	C	D
LNAV MDA	1620-1	393 (400-1)	1620-1½	393 (400-1½)
C CIRCLING	1760-1	533 (600-1)	1840-1¾ 613 (700-1¾)	1860-2 633 (700-2)

MIRL Rwy 9-27 0
REIL Rwy 9 and 27 0