

LUNNI ONE ARRIVAL (RNAV)

JACKSONVILLE APP CON
119.0 127.0 269.9 292.15 (270°-090°)
127.775 377.075 (181°-269°)
124.9 308.4 (091°-180°)
D-ATIS 125.85

ARRIVAL ROUTE DESCRIPTION

ESENT TRANSITION (ESENT.LUNNI1)

From GOTBE on track 201° to cross LUNNI between 8000 and 12000 and at 250K.

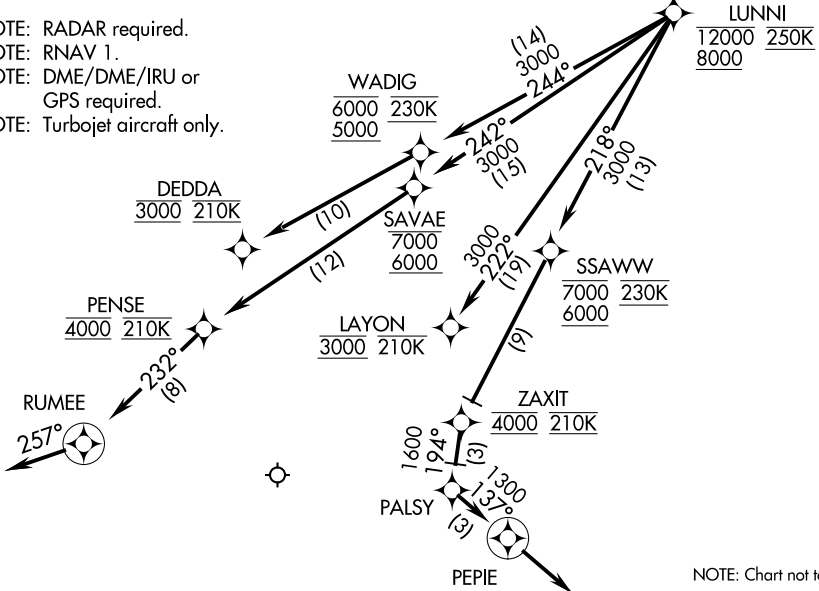
LANDING RWY 8: From LUNNI on track 242° to cross SAVAE between 6000 and 7000, then on track 242° to cross PENSE at 4000 and at 210K, then on track 232° to RUMEE, then on 257° heading or as assigned by ATC. Expect radar vectors to final approach course.

LANDING RWY 14: From LUNNI on track 244° to cross WADIG between 5000 and 6000 and at 230K, then on track 244° to cross DEDDA at 3000 and at 210K. Expect radar vectors to RNAV (RNP)/Visual approach as assigned by ATC.

LANDING RWY 26: From LUNNI on track 222° to cross LAYON at 3000 and at or below 210K. Expect radar vectors to RNAV (RNP)/Visual approach as assigned by ATC.

LANDING RWY 32: From LUNNI on track 218° to cross SSAWW between 6000 and 7000 and at 230K, then on track 218° to cross ZAXIT at 4000 and at 210K, then on track 194° to PALSY, then on track 137° to PEPIE, then on 137° track. Expect radar vectors to final approach course.

- NOTE: RADAR required.
- NOTE: RNAV 1.
- NOTE: DME/DME/IRU or GPS required.
- NOTE: Turbojet aircraft only.



NOTE: Chart not to scale.

SE-3, 05 SEP 2024 to 03 OCT 2024

SE-3, 05 SEP 2024 to 03 OCT 2024

LUNNI ONE ARRIVAL (RNAV)