

WAAS CH 56627 W19A	APP CRS 187°	Rwy Idg TDZE Apt Elev	6502 130 130
--	------------------------	-----------------------------	---

RNAV (GPS) RWY 19

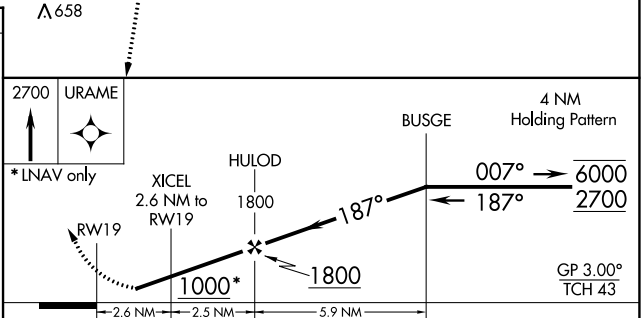
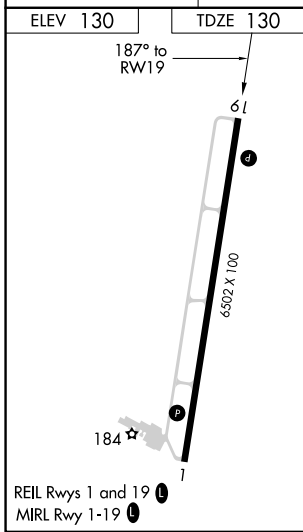
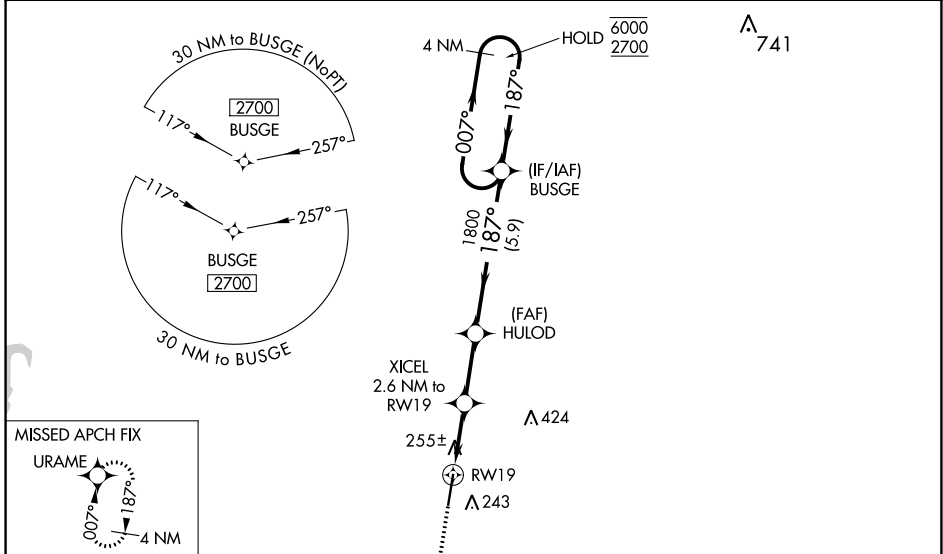
HARRELL FLD (CDH)

RNP APCH-GPS.

⚠ Rwy 19 helicopter visibility reduction below 3/4 SM NA. Baro-VNAV NA when using El Dorado altimeter setting. For uncompensated Baro-VNAV systems, LNAV/VNAV NA below -15°C or above 54°C. When local altimeter setting not received, use El Dorado altimeter setting and LPV DA to 517 feet, LNAV/VNAV DA to 503 feet and all MDA 80 feet; increase LPV all Cats visibility 1/8 SM, and LNAV Cats C and D, and Circling Cat D 1/4 SM.

MISSED APPROACH:
Climb to 2700 direct URAM and hold.

AWOS-3 125.2	FORT WORTH CENTER 128.2 269.1	UNICOM 122.7 (CTAF) 📶
------------------------	---	--



CATEGORY	A	B	C	D
LPV DA		440-1	310 (400-1)	
LNAV/VNAV DA		426-1	296 (300-1)	
LNAV MDA	520-1	390 (400-1)	520-1 1/8	390 (400-1 1/8)
CIRCLING	560-1 430 (500-1)	580-1 450 (500-1)	580-1 1/2 450 (500-1 1/2)	960-2 3/4 830 (900-2 3/4)

SC-1, 05 SEP 2024 to 03 OCT 2024

SC-1, 05 SEP 2024 to 03 OCT 2024