

WALLACE, NORTH CAROLINA

AL-5587 (FAA)

24109

WAAS CH 53336 W27A	APP CRS 274°	Rwy Idg TDZE 36 Apt Elev 38	4002
--	------------------------	---	-------------

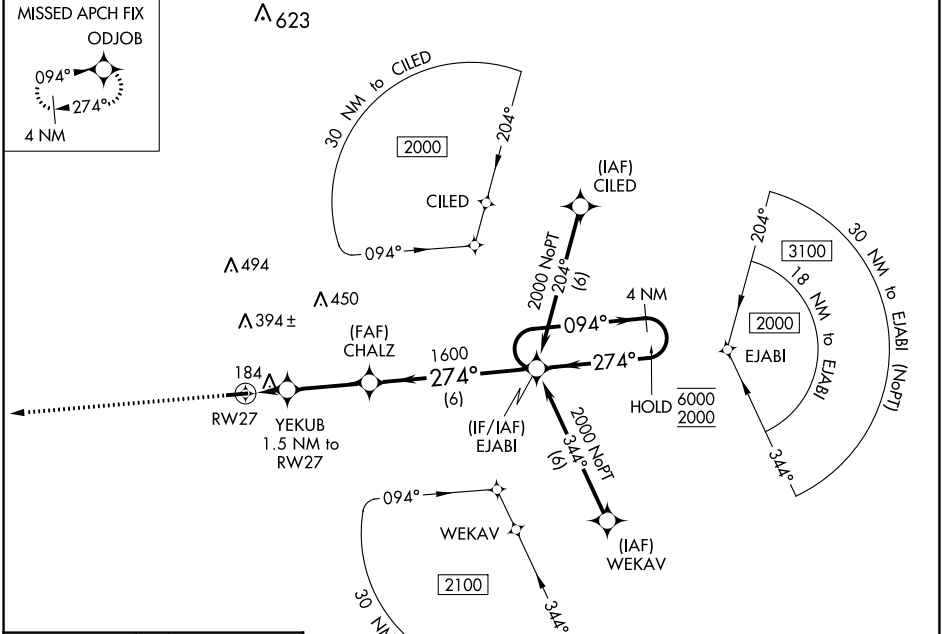
RNAV (GPS) RWY 27
WALLACE-PENDER (ACZ)

RNP APCH - GPS.

⚠ Circling Rwy 9 NA at night. Rwy 27 helicopter visibility reduction below 3/4 SM NA.
⚠ NA Baro-VNAV NA. When local altimeter setting not received, use Kenansville altimeter setting.

MISSED APPROACH: Climb to 2000 direct ODJOB and hold.

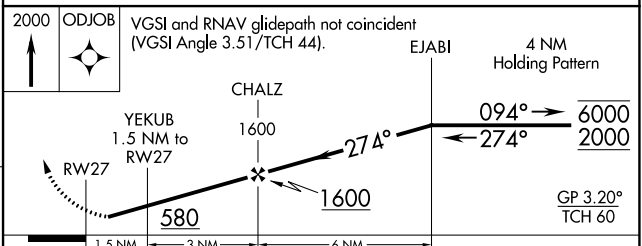
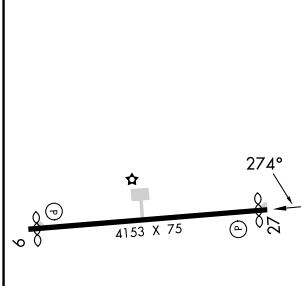
AWOS-3P 121.07	WILMINGTON APP CON★ 135.75 317.425	UNICOM 122.8 (CTAF) 0
--------------------------	--	---------------------------------



SE-2, 05 SEP 2024 to 03 OCT 2024

SE-2, 05 SEP 2024 to 03 OCT 2024

ELEV 38	TDZE 36
---------	---------



CATEGORY	A	B	C	D
LPV DA	406-1 370 (400-1)			NA
LNAV/VNAV DA	599-13/4	563 (600-13/4)		NA
LNAV MDA	560-1	524 (600-1)		560-1 1/2 524 (600-1 1/2)
C CIRCLING	620-1	582 (600-1)		820-2 1/4 782 (800-2 1/4) 820-2 1/2 782 (800-2 1/2)

WALLACE, NORTH CAROLINA
Orig-C 18APR24

34°43'N-78°00'W

WALLACE-PENDER (ACZ)
RNAV (GPS) RWY 27