

APP CRS	Rwy Idg	5000
214°	TDZE	48
	Apt Elev	48

RNAV (GPS) RWY 21

ACCOMACK COUNTY (MFLV)

RNP APCH.

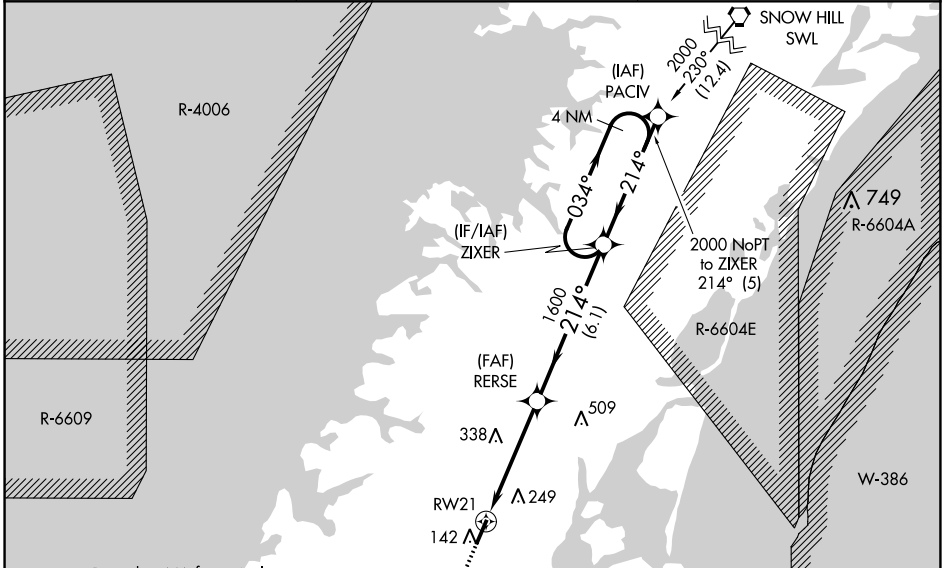
Rwy 21 helicopter visibility reduction below 3/4 SM NA.

MISSED APPROACH: Climb to 2000 direct UCGEL and hold.

AWOS-3
118.175

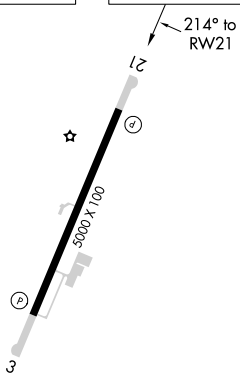
PATUXENT APP CON*
127.95 314.0

UNICOM
122.8 (CTAF)

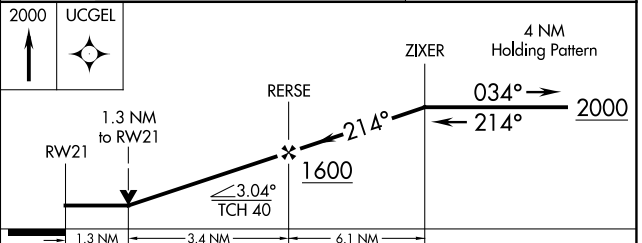


Procedure NA for arrival on CCV VORTAC airway radials 323 CW 041.

ELEV	48	TDZE	48
------	-----------	------	-----------



MIRL Rwy 3-21
REIL Rws 3 and 21



CATEGORY	A	B	C	D
LNAV MDA	500-1	452 (500-1)	500-1 3/8	452 (500-1 3/8)
<input checked="" type="checkbox"/> CIRCLING	500-1	560-1	700-1 3/4	700-2
	452 (500-1)	512 (600-1)	652 (700-1 3/4)	652 (700-2)

NE-3, 05 SEP 2024 to 03 OCT 2024

NE-3, 05 SEP 2024 to 03 OCT 2024