

MELFA, VIRGINIA

AL-5598 (FAA)

22279

VORTAC CCV 112.2 Chan 59	APP CRS 042°	Rwy ldg TDZE 47 Apt Elev 48	5000
--	------------------------	---	-------------

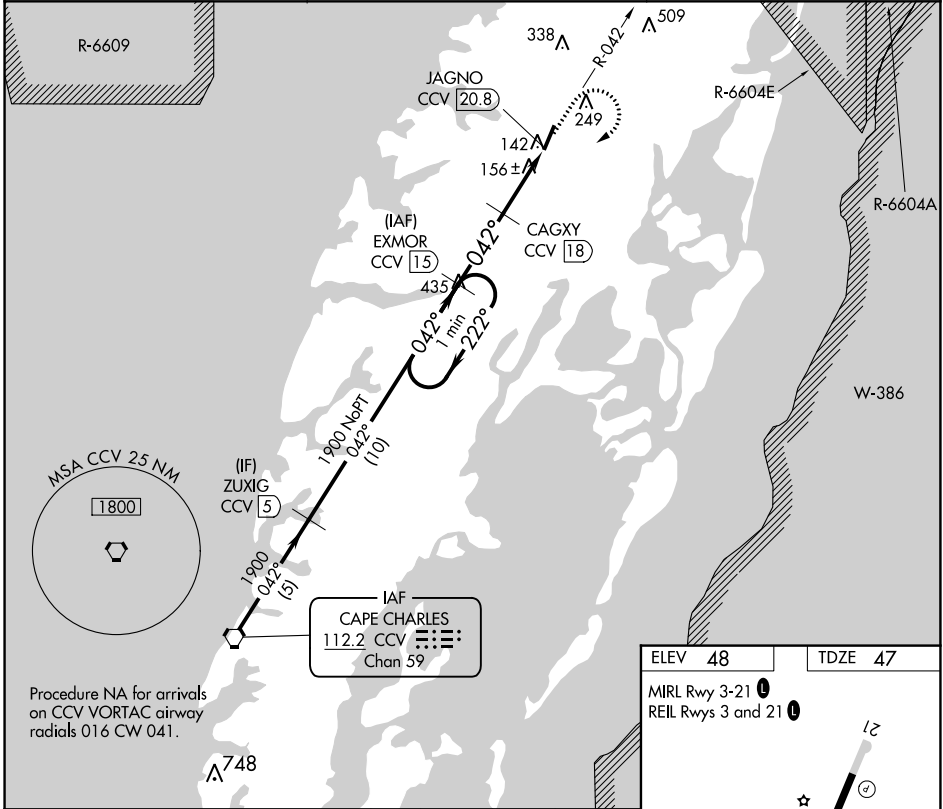
VOR RWY 3

ACCOMACK COUNTY (MFV)

▼ DME required.
Rwy 3 helicopter visibility reduction below $\frac{3}{4}$ SM NA.

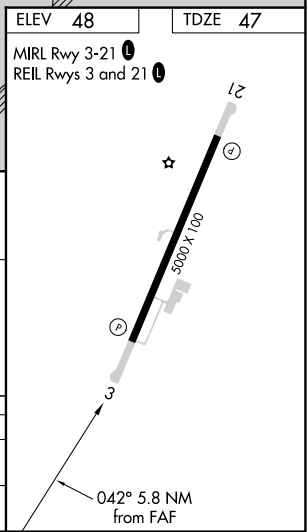
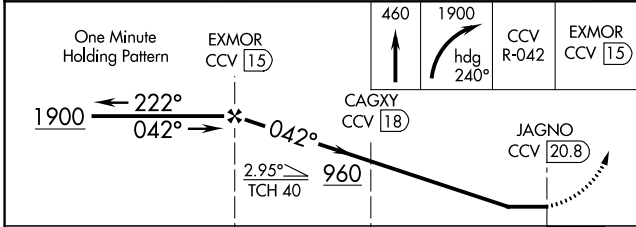
MISSED APPROACH: Climb to 460 then climbing right turn to 1900 on heading 240° and CCV VORTAC R-042 to EXMOR/CCV 1.5 DME and hold.

AWOS-3 118.175	PATUXENT APP CON* 127.95 314.0	UNICOM 122.8 (CTAF) 0
--------------------------	--	---------------------------------



NE-3, 05 SEP 2024 to 03 OCT 2024

NE-3, 05 SEP 2024 to 03 OCT 2024



	3 NM		2.8 NM	
CATEGORY	A	B	C	D
S-3	440-1	393 (400-1)	440-1 $\frac{1}{8}$	393 (400-1 $\frac{1}{8}$)
C CIRCLING	500-1 452 (500-1)	560-1 512 (600-1)	700-1 $\frac{3}{4}$ 652 (700-1 $\frac{3}{4}$)	700-2 652 (700-2)

MELFA, VIRGINIA
Amdt 2B 11AUG22

37°39'N-75°46'W

VOR RWY 3

ACCOMACK COUNTY (MFV)